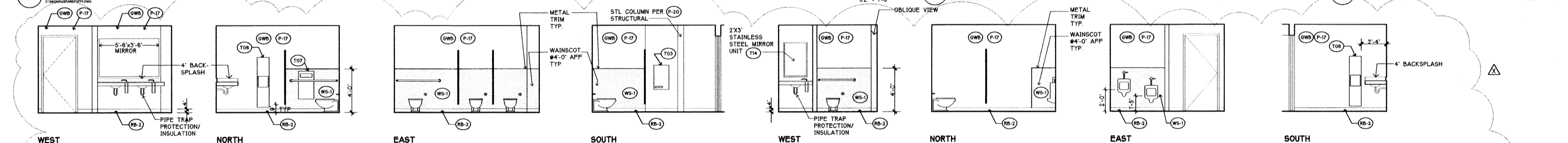


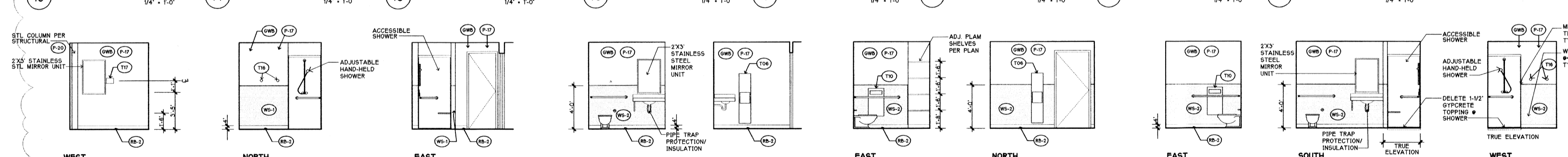
7 FIRST FLOOR BATHROOM-IN COMMONS

4 WASHROOM TYP

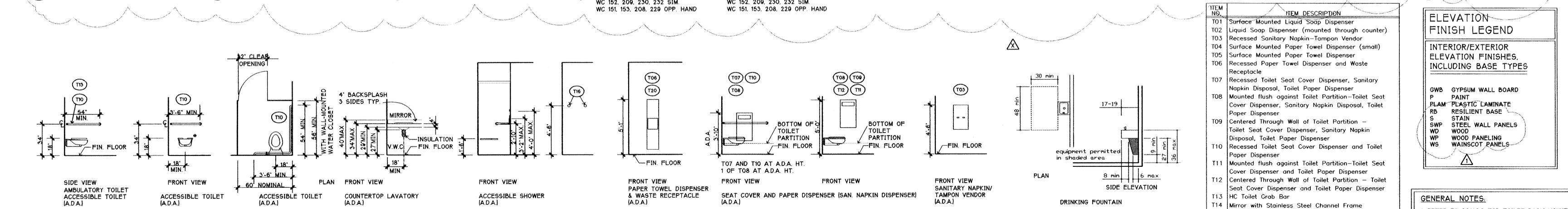
12 WASHROOM 208/209



13 WOMEN 113, 14 WOMEN 113, 15 WOMEN 113, 16 WOMEN 113, 17 MEN 110, 18 MEN 110, 19 MEN 110, 20 MEN 110



21 SHOWER 109, 22 SHOWER 109, 23 SHOWER 109, 24 WC 150, 25A WC 150, 25B WC 151, 26 WC/SHOWER 231, 27 WC/SHOWER 231, 28 WC/SHOWER 231, 29 WC/SHOWER 231

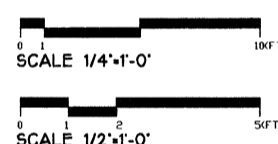


30 TOILET & SHOWER ROOM FIXTURE MOUNTING STANDARDS FOR ACCESSIBILITY

ITEM NO.	ITEM DESCRIPTION
T01	Surface Mounted Liquid Soap Dispenser
T02	Liquid Soap Dispenser (mounted through counter)
T03	Recessed Sanitary Napkin-Tampon Vendor
T04	Surface Mounted Paper Towel Dispenser (small)
T05	Surface Mounted Paper Towel Dispenser
T06	Recessed Paper Towel Dispenser and Waste Receptacle
T07	Recessed Toilet Seat Cover Dispenser, Sanitary Napkin Disposal, Toilet Paper Dispenser
T08	Mounted Flush against Toilet Partition-Toilet Seat Cover Dispenser, Sanitary Napkin Disposal, Toilet Paper Dispenser
T09	Centered Through Wall of Toilet Partition - Toilet Seat Cover Dispenser, Sanitary Napkin Disposal, Toilet Paper Dispenser
T10	Recessed Toilet Seat Cover Dispenser and Toilet Paper Dispenser
T11	Mounted Flush against Toilet Partition-Toilet Seat Cover Dispenser and Toilet Paper Dispenser
T12	Centered Through Wall of Toilet Partition - Toilet Seat Cover Dispenser and Toilet Paper Dispenser
T13	HC Toilet Grab Bar
T14	Mirror with Stainless Steel Channel Frame
T15	Mop and Broom Holder
T16	Towel Hooks @ Shower
T17	Electric hair blow dryer @ 4'6" A.F.F.
T20	Semi-Recessed Paper Towel Dispenser and Waste Receptacle
T21	Surface Mounted Toilet Seat Cover Dispenser and Toilet Paper Dispenser

ELEVATION FINISH LEGEND	
GWB	GYPSUM WALL BOARD
P	PAINT
PLAM	PLASTIC LAMINATE
RB	RESILIENT BASE
S	STAIN
SWP	STEEL WALL PANELS
WD	WOOD
WP	WOOD PANELING
WS	WAINSCOT PANELS

GENERAL NOTES:
1. REFER TO 30(A)3 FOR TOILET ROOM MOUNTING STANDARDS FOR ACCESSIBILITY.
2. TYPICAL WASHROOM FLOOR FINISH POLISHED & SEALED CONCRETE.
3. TYPICAL WC & SHOWER BASES, RESILIENT BASE



DATE: 5/18/99
CONSTR. SET

BY: [Signature]
PROJECT MANAGER
DAS/DWG
PROJECT ARCHITECT
DAS/KT
DATE: 5/18/99

2029 REGISTERED ARCHITECT
THOMAS D. EMMERT
STATE OF WASHINGTON

WASHROOMS & SHOWERS - ENLARGED PLANS & ELEVATIONS

08060.05
MAY 18, 1999

A3.3 CONSTRUCTION SET