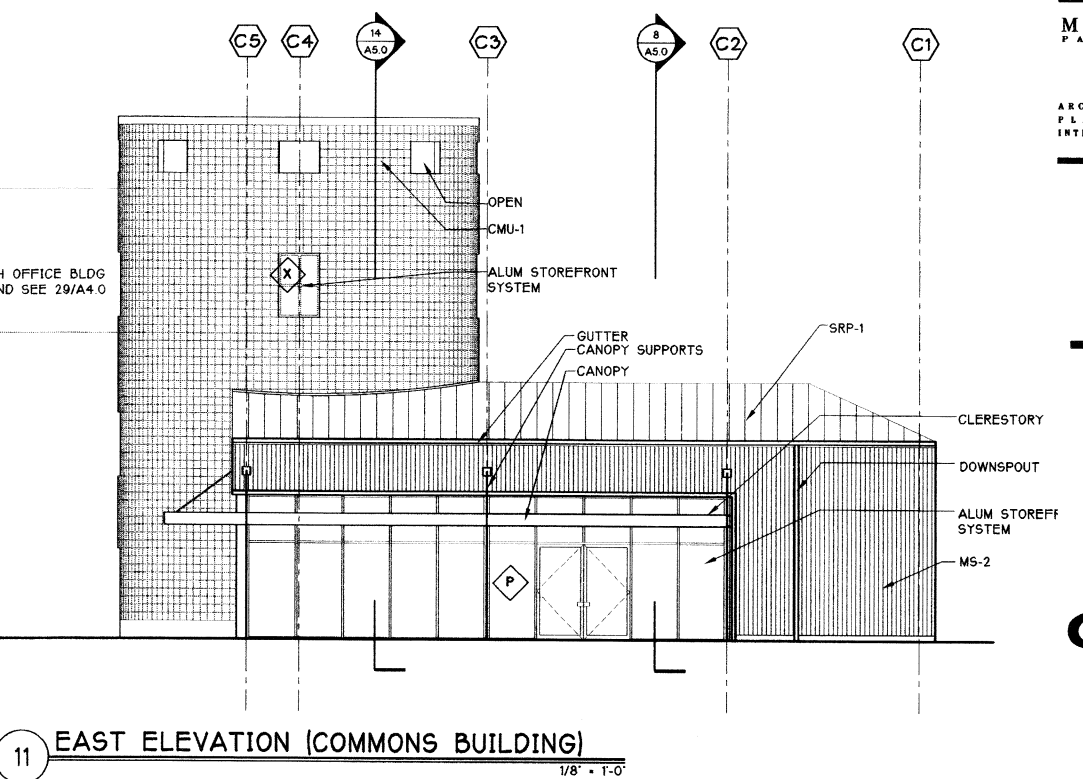
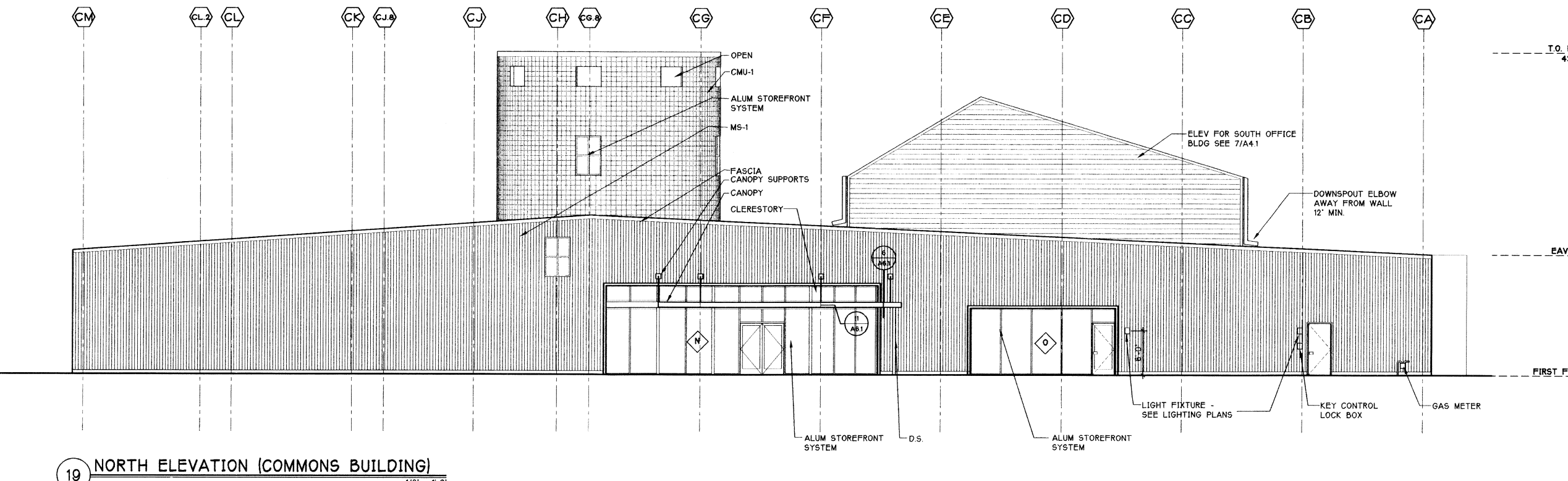


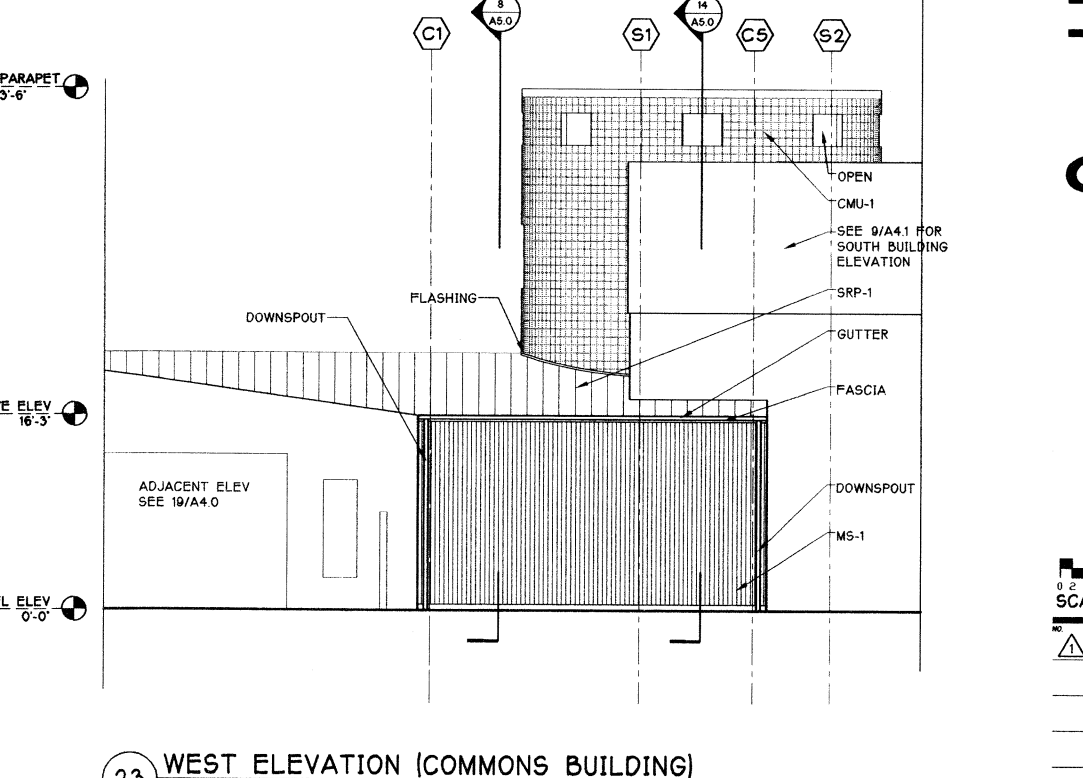
7 SOUTH ELEVATION (COMMONS BUILDING)  
1/8" = 1'-0"



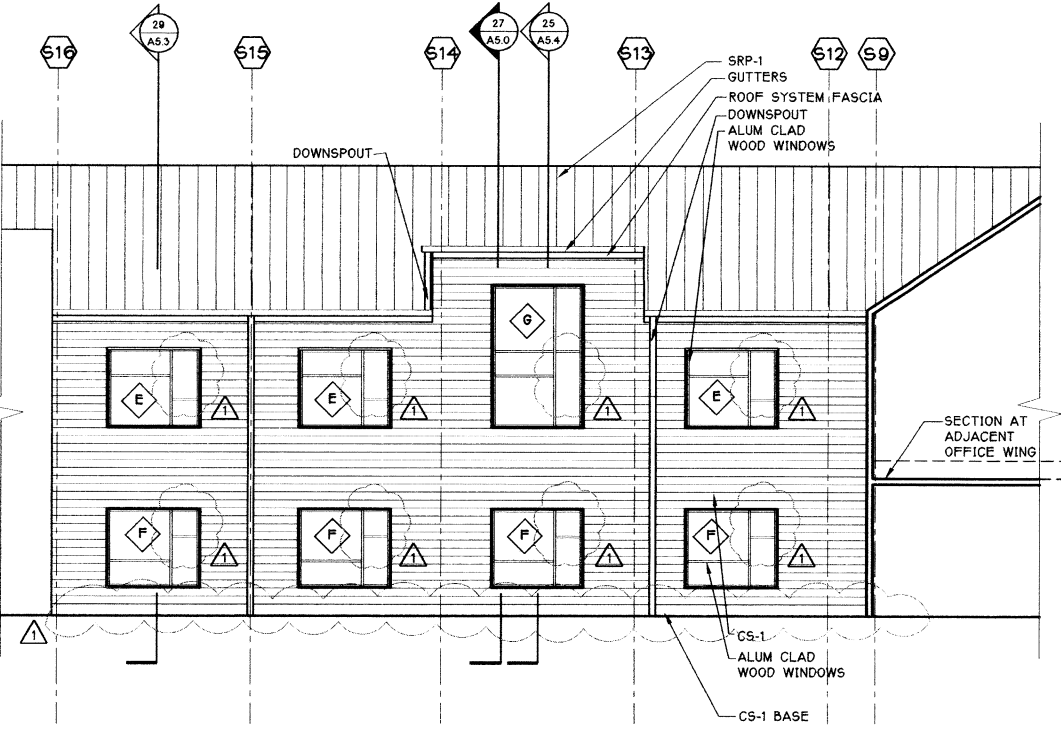
11 EAST ELEVATION (COMMONS BUILDING)  
1/8" = 1'-0"



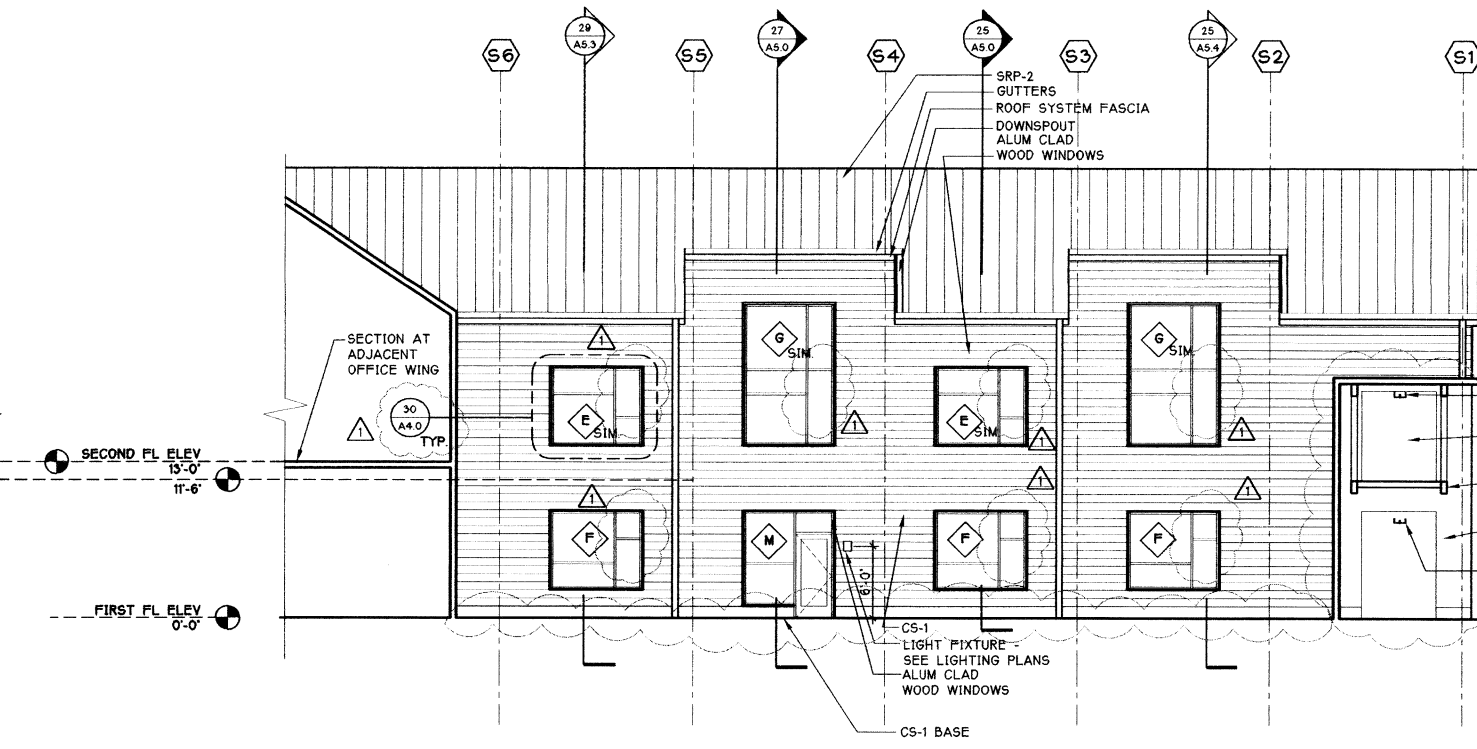
19 NORTH ELEVATION (COMMONS BUILDING)  
1/8" = 1'-0"



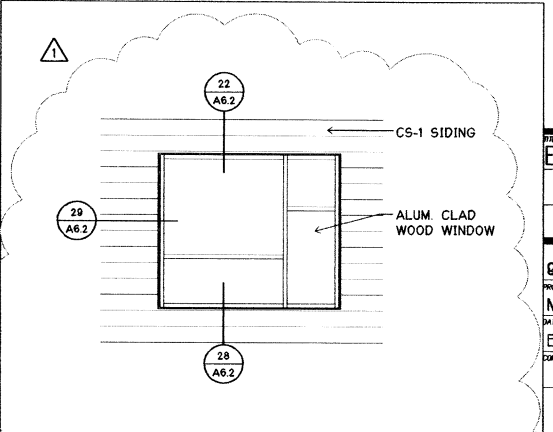
23 WEST ELEVATION (COMMONS BUILDING)  
1/8" = 1'-0"



25 NORTHEAST ELEVATION (SOUTH BUILDING)  
1/8" = 1'-0"



29 EAST ELEVATION (SOUTH BUILDING)  
1/8" = 1'-0"



30 ALUM. CLAD EXT. WINDOW TRIM  
1/4" = 1'-0"

SCALE 1/8" = 1'-0"  
5/18/99 CONSTRU SET

LEGEND  
CS - CEMENT BOARD SIDING  
SRP - STEEL ROOF PANEL  
MS - METAL SIDING

NOTE  
GUARDRAIL BALLUSTERS DELETED FOR CLARITY OF DRAWING

BG  
RF  
PROJECT NUMBER  
DAS/DWG  
PROJECT PROJECT  
DWG/SKC  
FB  
DND

2029 REGISTERED ARCHITECT  
THOMAS D. ENRICH  
STATE OF WASHINGTON

EXTERIOR ELEVATIONS  
08060.05  
PROJECT NO.  
MAY 18, 1999  
E:\98060\DDA4-0  
DWG FILE NAME  
A4.0 CONSTRUCTION SET  
1/4" = 1'-0"