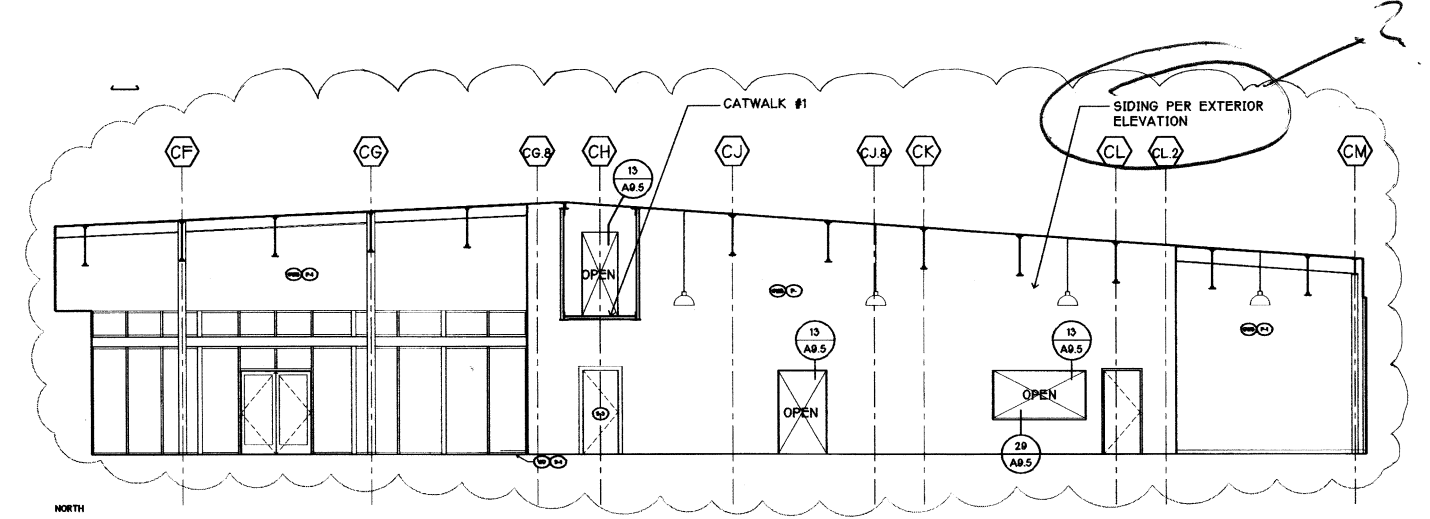
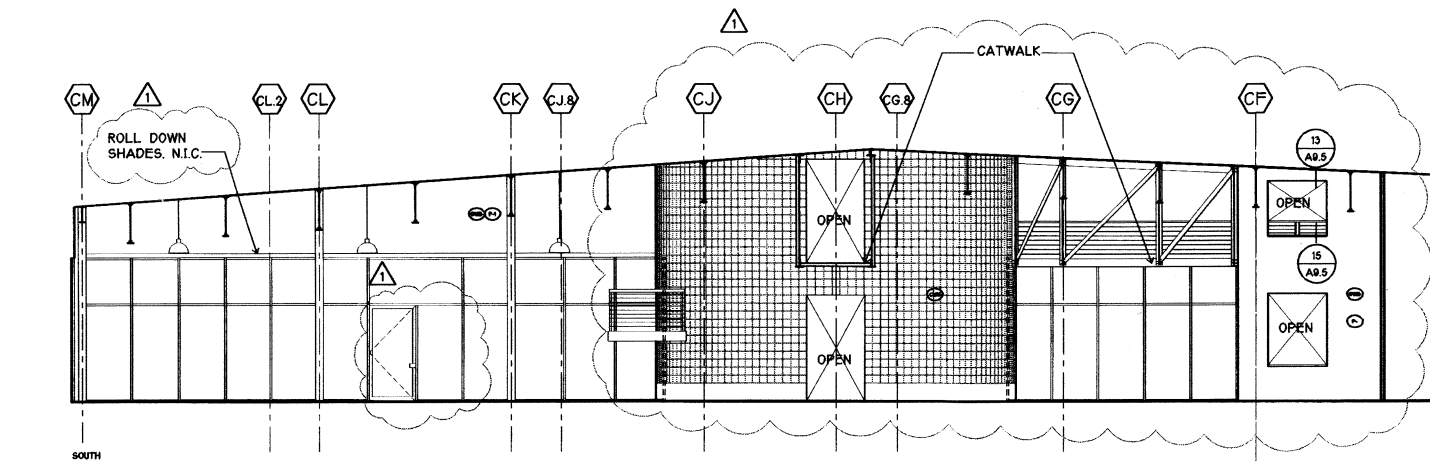




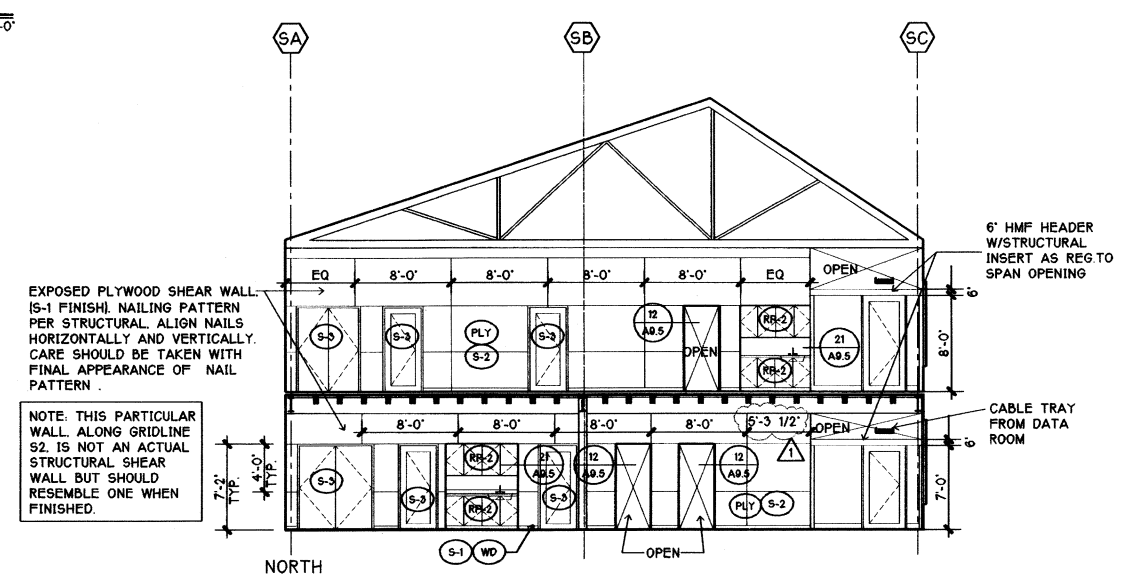
SUN HEALTHCARE SYSTEMS, INC.
CAMPUS: PHASE ONE
ANACORTES, WASHINGTON



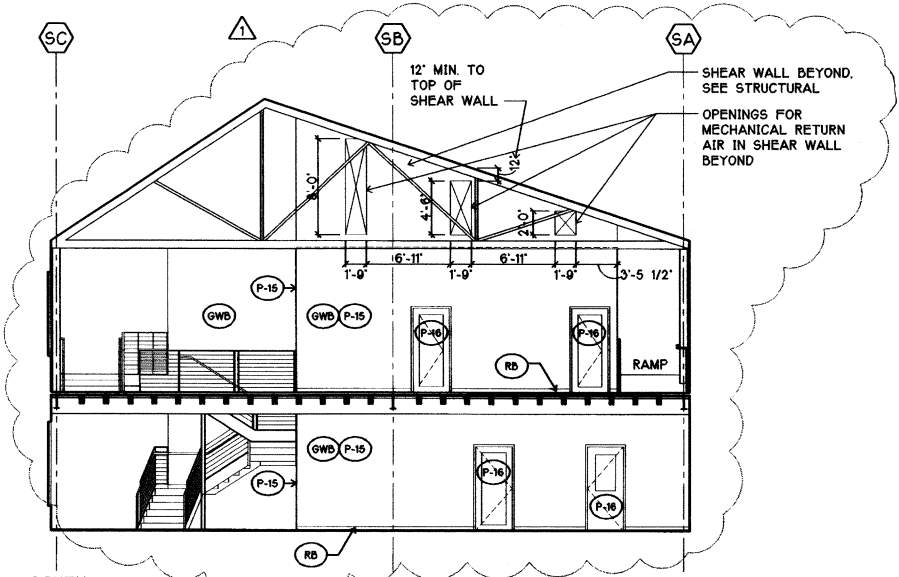
1 ENTRY LOBBY & BREAK-OUT SPACE 1/8" = 1'-0"



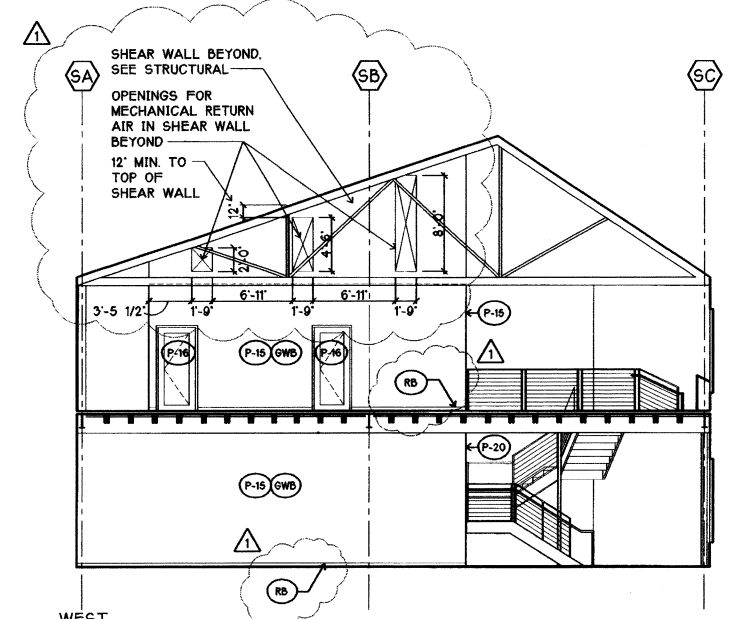
2 ENTRY LOBBY & BREAK-OUT SPACE 1/8" = 1'-0"



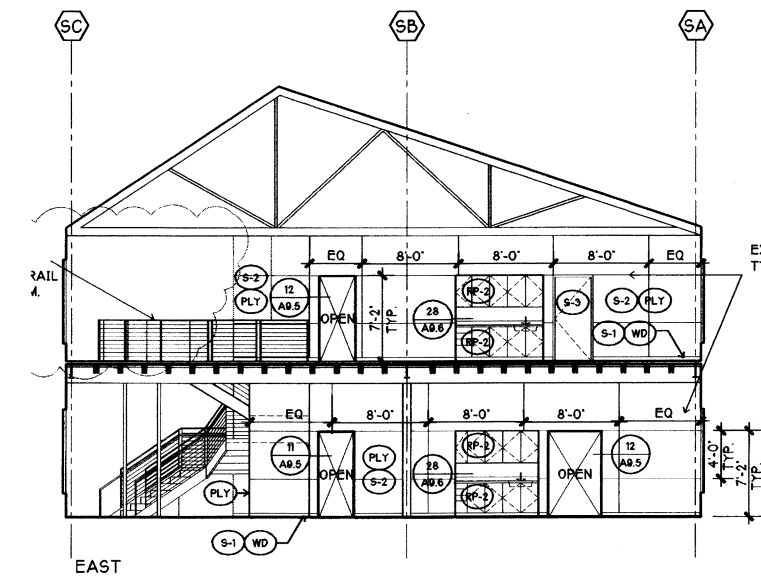
3 OPEN OFFICE 134 / 214 1/8" = 1'-0"



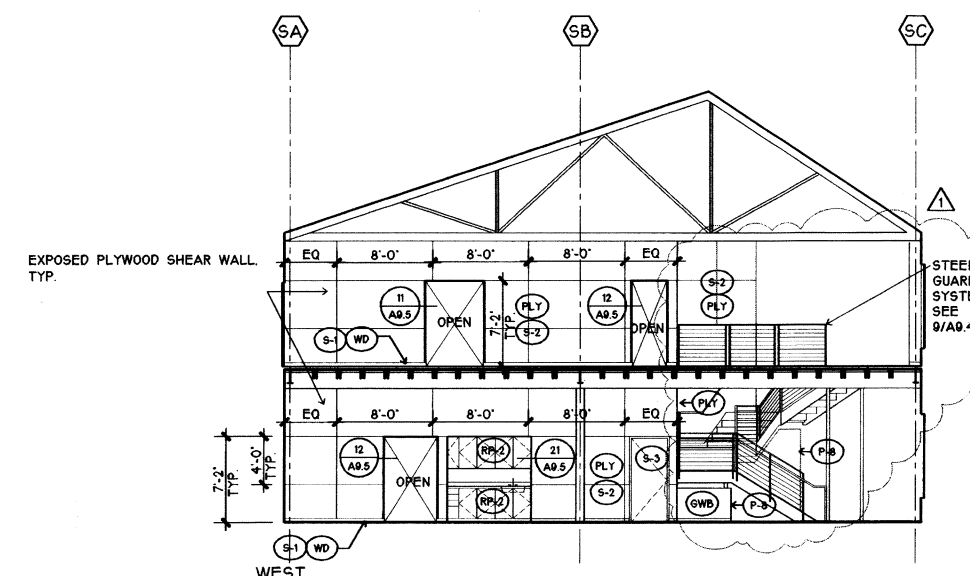
4 OPEN OFFICE 134 / 214 1/8" = 1'-0"



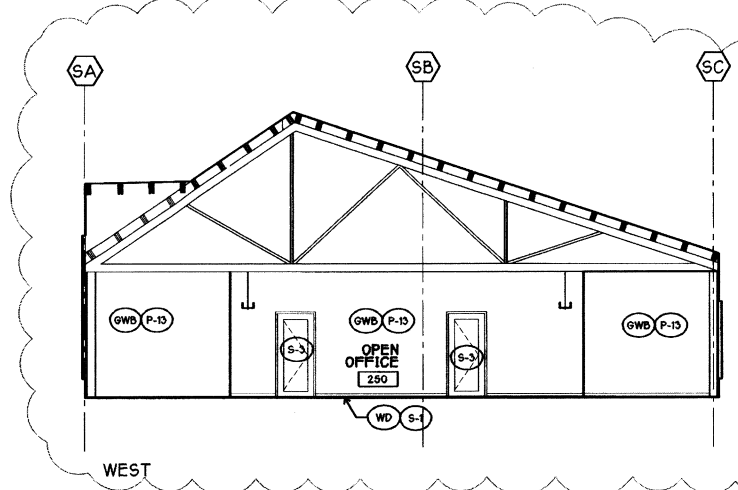
5 OPEN OFFICE 139 / 223 1/8" = 1'-0"



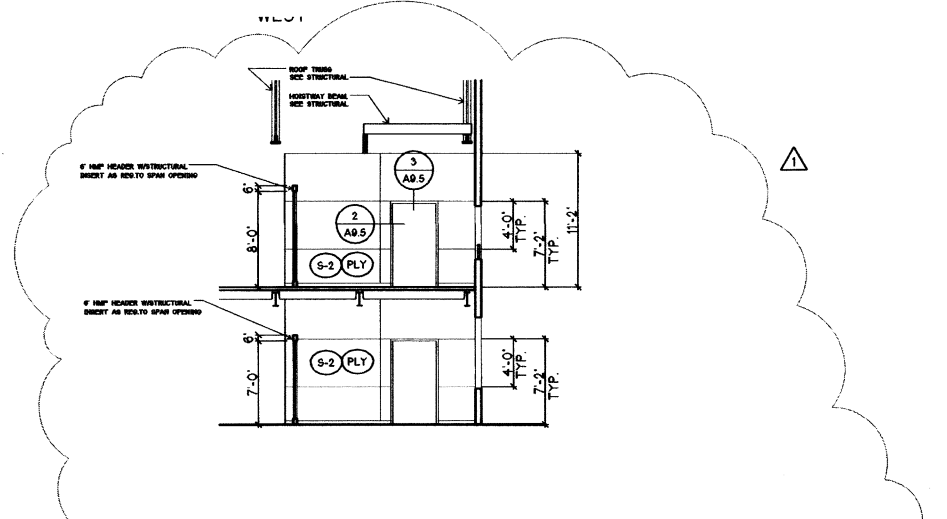
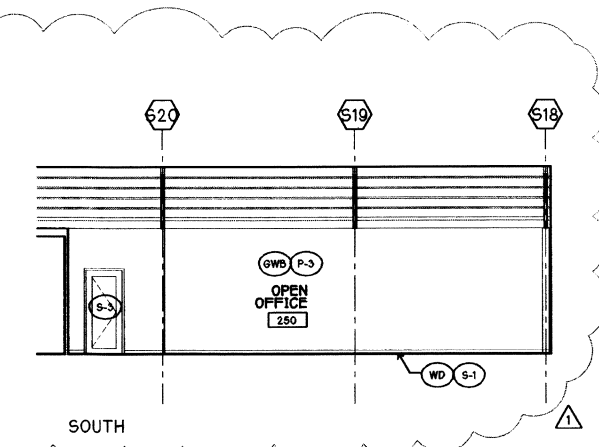
6 OPEN OFFICE 139 / 223 1/8" = 1'-0"



7 OPEN OFFICE 159 / 250 1/8" = 1'-0"



8 OPEN OFFICE 250 1/8" = 1'-0"



9 VESTIBULE 133 / 213 1/8" = 1'-0"

SCALE 1/8" = 1'-0"
DATE 5/18/99 CONSTRU SET

BG
RF
DAS/DWG
KT/SC/MS
FB
CDB

2029 REGISTERED ARCHITECT
THOMAS D. EMBRICH
STATE OF WASHINGTON

INTERIOR ELEVATIONS

98060.00
MAY 12, 1999
E:\98060\CD\A8-0.DWG

A8.0 CONSTRUCTION SET