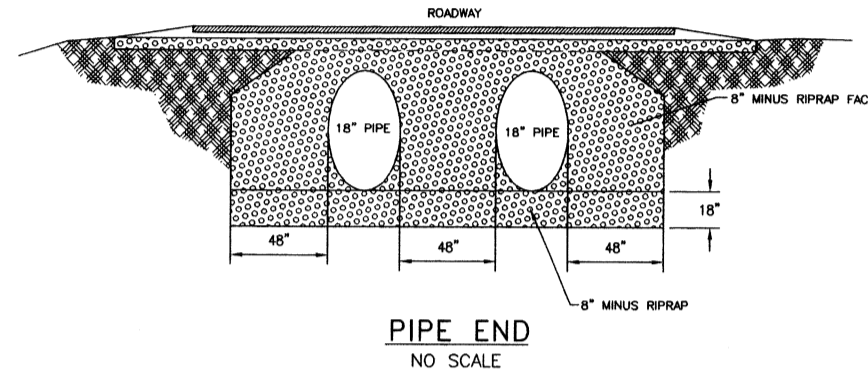
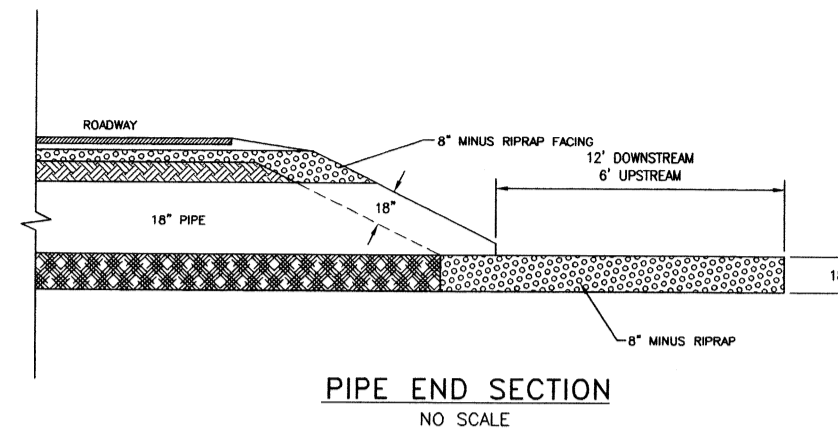


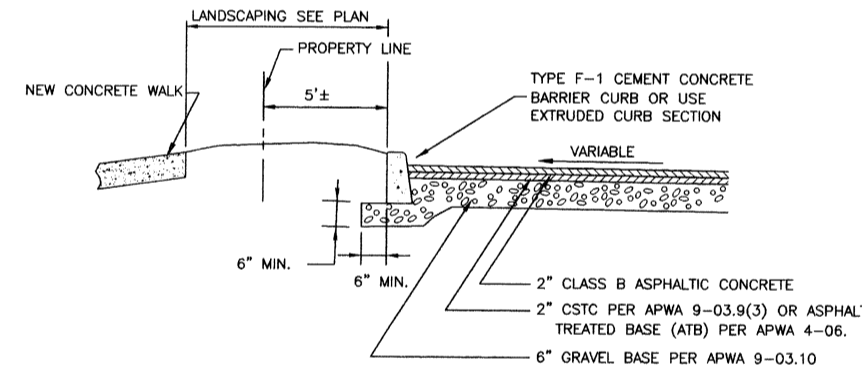
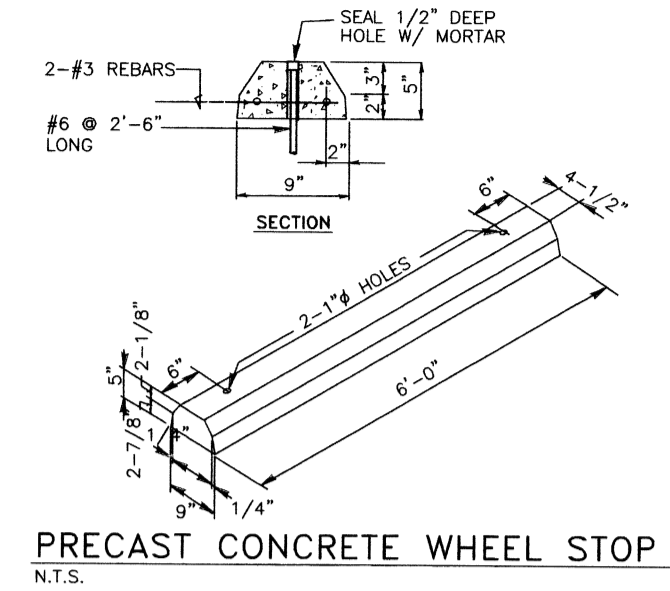
GENERAL NOTES:

- DUMMY JOINTS SHALL BE PLACED NOT TO EXCEED 15' O.C. NOR LESS THAN 10' O.C. THEY SHALL NOT BE LESS THAN 3/16" IN THICKNESS AND SHALL EXTEND 2-1/4" DEEP.
- 1/2" THRU-JOINTS SHALL BE PLACED AT BACK, SIDES AND FRONT (BEHIND CURB) OF APPROACH.
- CEMENT CONCRETE SHALL BE CLASS 3000 AIR ENTRAINED.
- ALL JOINTS SHALL BE CLEANED AND EDGED.
- APPROACH SHALL NOT BE POURED INTEGRAL WITH CURB AND GUTTER.
- SUBGRADE COMPACTION SHALL BE 95% MODIFIED PROCTOR.

TYPICAL DEPRESSED DRIVEWAY DETAIL
N.T.S.

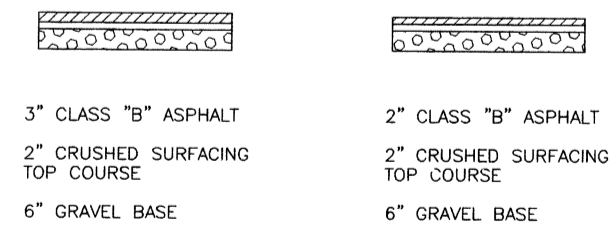
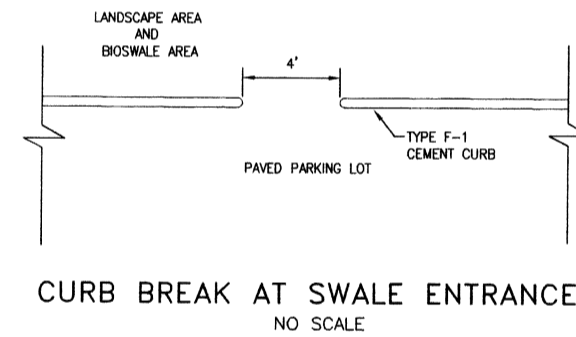


HEADWALL DETAIL AT TWIN 18" CULVERT
NO SCALE



CURB & PARKING SECTION
NO SCALE

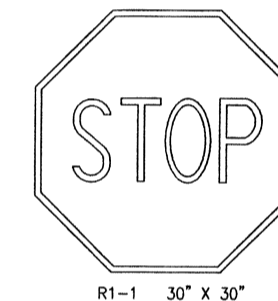
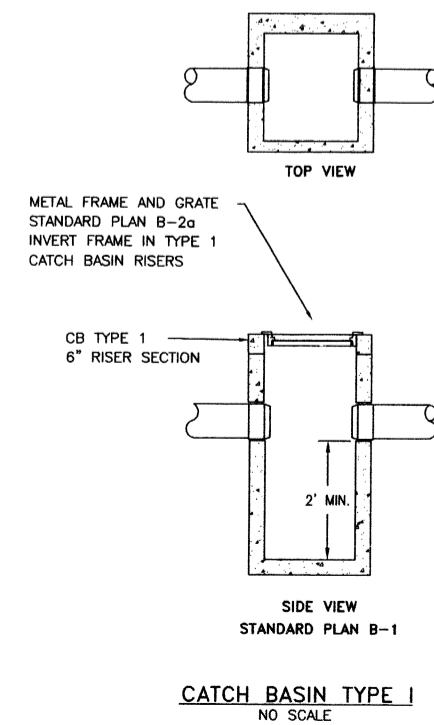
(SEE ALTERNATE PAVING SECTION BELOW)



ALTERNATE PAVING SECTIONS:

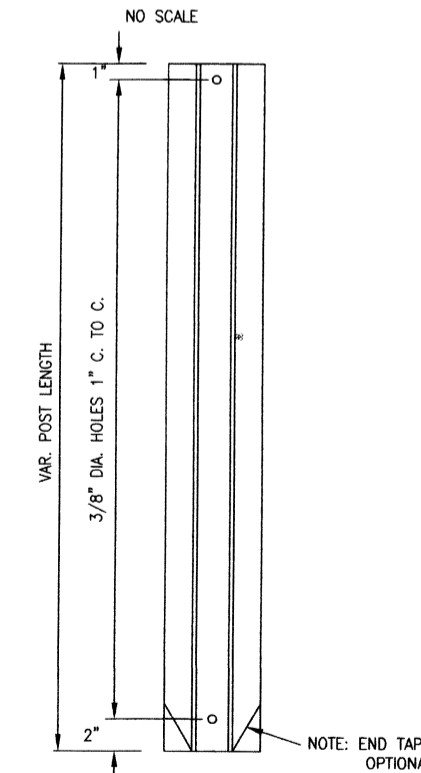


TYPICAL ASPHALT SECTIONS
NO SCALE



STOP SIGN TO BE INSTALLED AS PER MANUAL ON UNIFORM TRAFFIC CONTROL DEVICES FOR STREETS AND HIGHWAYS, U.S. DEPARTMENT OF TRANSPORTATION FEDERAL HIGHWAY ADMINISTRATION PART 2B-4 & PART 2B-9

STOP SIGN DETAIL
NO SCALE



NOTE: ALL POSTS SHALL BE OF ADEQUATE LENGTH TO MEET THE REQUIREMENTS FOR ERECTION AS STATED IN THE CURRENT "MANUAL ON UNIFORM TRAFFIC CONTROL DEVICES FOR STREET & HIGHWAYS". STEEL POSTS SHALL BE EMBEDDED 3'-6" MIN. CONSTRUCT IN ACCORDANCE WITH NJDOT CONSTRUCTION DETAIL NO. CD-37.

DESIGNED	ML	4/28/99	BY	
DRAWN	SBK	5/1/99	BY	
CHECKED	ML		BY	
REVISIONS			DATE	BY
1				
2				
3				
4				
5				
6				
7				
8				
9				
10				
11				
12				
13				
14				
15				
16				
17				
18				
19				
20				
21				
22				
23				
24				
25				
26				
27				
28				
29				
30				
31				
32				
33				
34				
35				
36				
37				
38				
39				
40				
41				
42				
43				
44				
45				
46				
47				
48				
49				
50				

SCHMERMER ENGINEERING INC.
1004 COMMERCIAL AVENUE, SUITE 152
ANCORAGES, WA 98221-4163 (360) 293-1960

SUN SYSTEMS, INC.
MISCELLANEOUS DETAILS

JOB NO.	98-021
SHEET	C11
11	OF 11