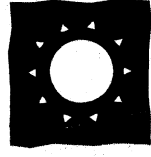




415 OLIVE WAY
SUITE 500
SEATTLE WA 98101
(206) 462 5244
FAX (206) 462 7004

ARCHITECTURE
PLANNING &
INTERIOR DESIGN



SUN HEALTHCARE SYSTEMS, INC.

CAMPUS: PHASE ONE
ANACORTES, WASHINGTON

NORTON CORROSION LIMITED

REF. # E-15519 Woodinville, Washington



TRUE NORTH

DATE 5/18/99
CONSTRU. SET

B6
RF
DAS/DWG
DAS/DWG
FB

CHECK SHEET



FOUNDATION PLAN
CATHODIC PROTECTION
SYSTEM LAYOUT

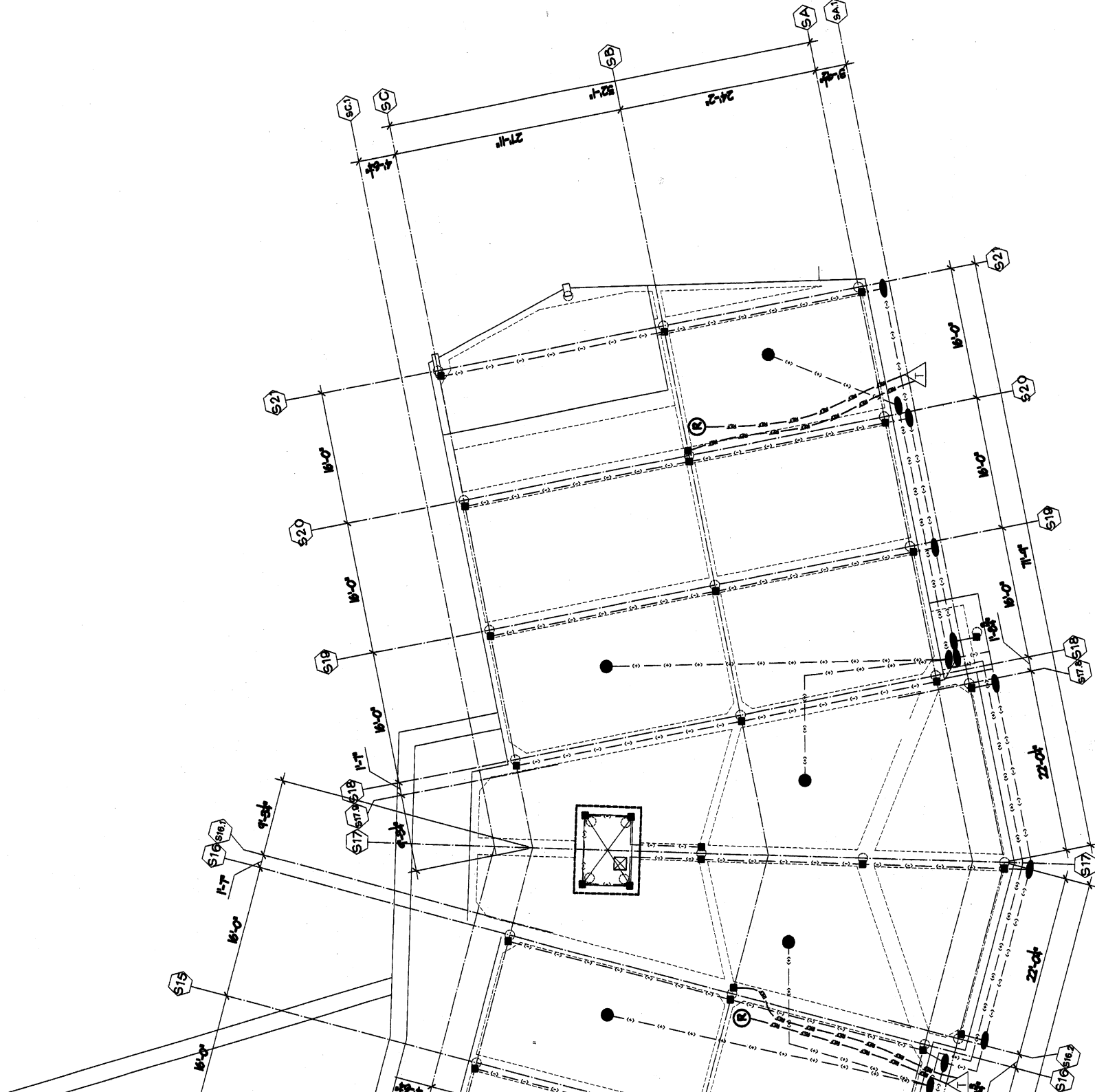
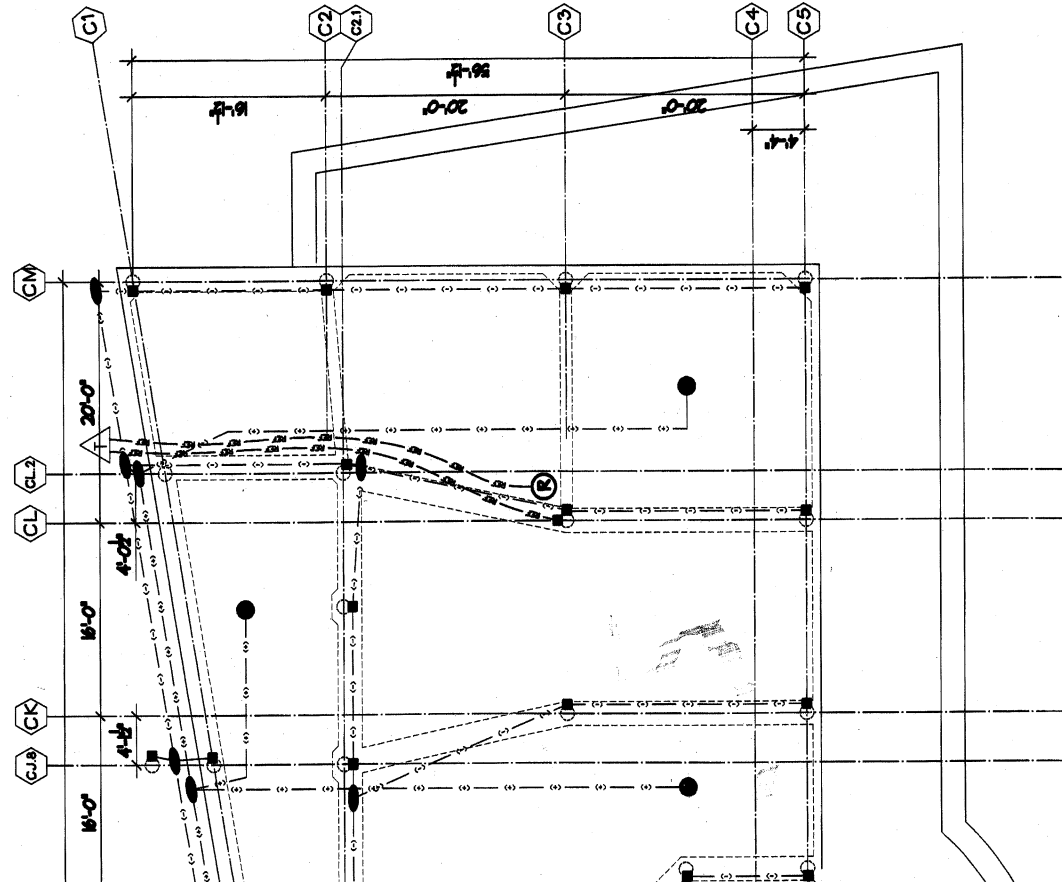
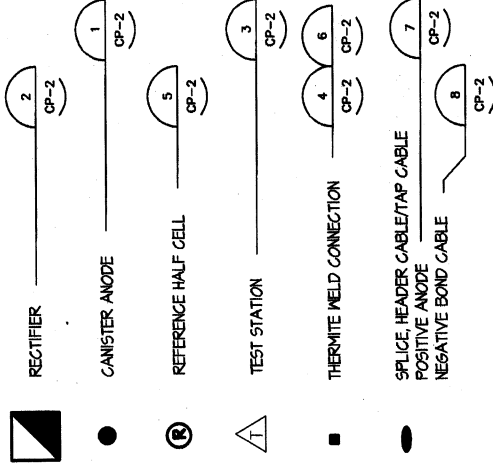
98060.00
MAY 12, 1999

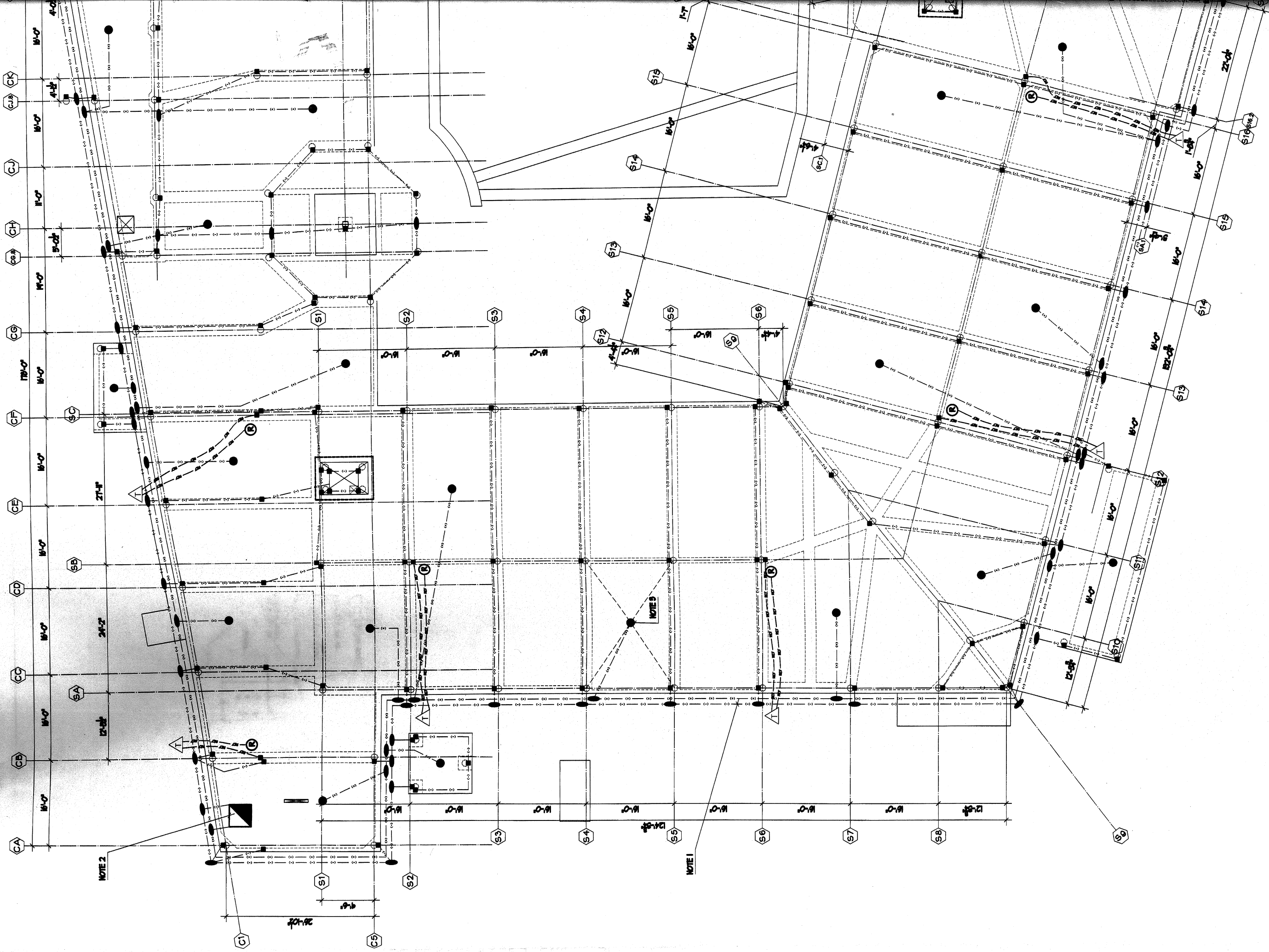
CP-1 CONSTRUCTION SET

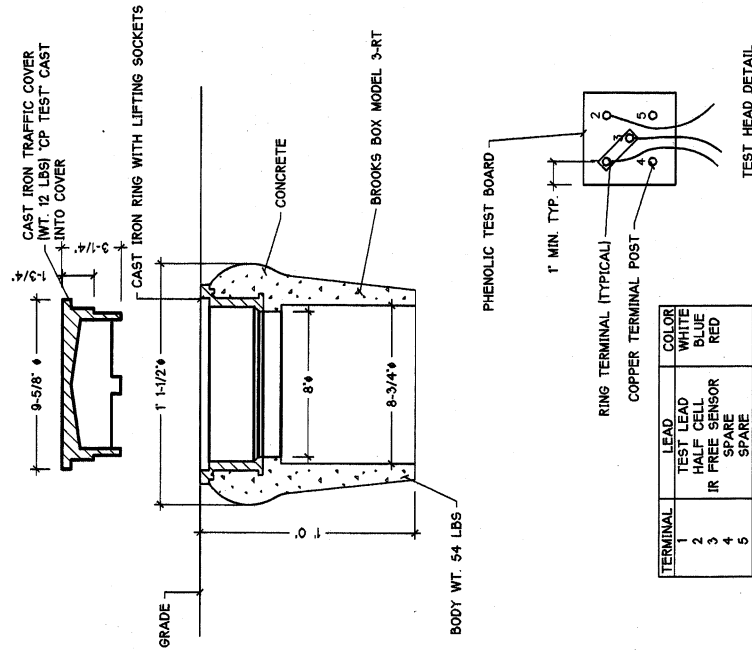
COMPANY: JOHN F. KROPFER & ASSOCIATES, INC.

NOTES:
1. INSTALL NEGATIVE AND POSITIVE HEADER CABLES IN A COMMON PVC CONDUIT SYSTEM.
2. RECTIFIER UNIT IS TO BE MOUNTED ON THE EXTERIOR WALL INSIDE ROOM 100, BIKE STORAGE CLOSET.
3. IN GENERAL, ANODES SHALL BE LOCATED CENTERED BETWEEN PILES, PROVIDING EQUAL SEPARATION FROM NEARBY PILING.

CATHODIC PROTECTION SYSTEM LEGEND

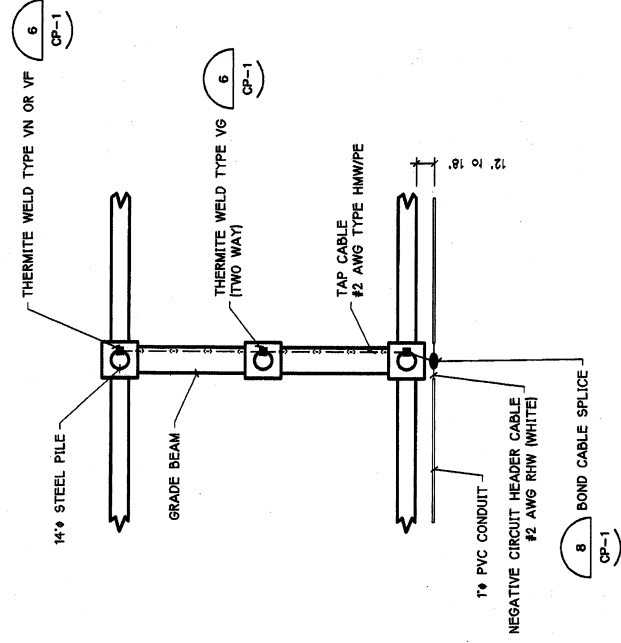




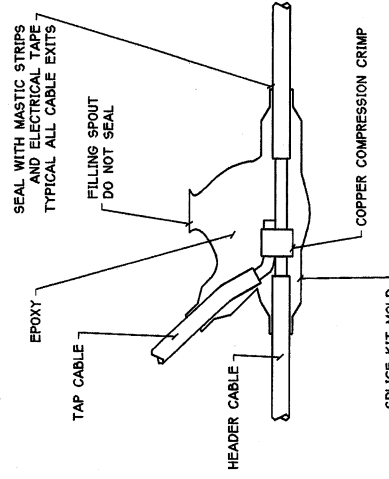


- NOTES:
 1. PROVIDE BONDING STRAP BETWEEN TERMINALS 1 AND 3.
 2. PROVIDE 5 TERMINALS MINIMUM.

TEST STATION DETAIL

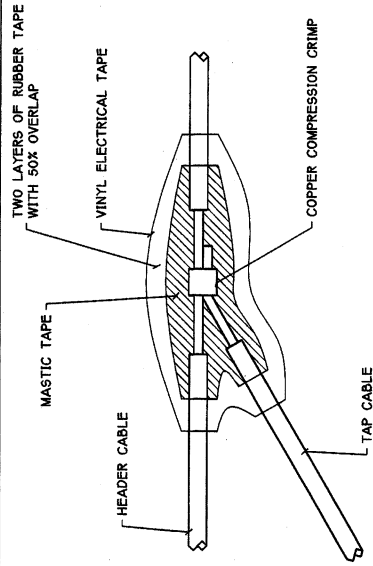


TYPICAL PILE BONDING DETAIL



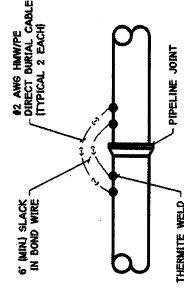
- NOTES:
 1. DO NOT CUT THROUGH HEADER CABLE CONDUCTOR.
 2. EXPOSE ONLY SUFFICIENT CONDUCTOR TO COMPLETE CONNECTION.
 3. EPOXY STYLE SPLICE KIT SHOWN. APPROVED HEAT SHRINK SPLICE KITS ARE ACCEPTABLE.

ANODE SPLICE KIT DETAIL



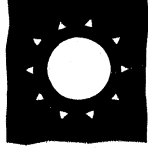
- NOTES:
 1. DO NOT CUT THROUGH HEADER CABLE CONDUCTOR.
 2. EXPOSE ONLY SUFFICIENT CONDUCTOR TO COMPLETE CONNECTION.
 3. APPLY ELECTRICAL COATING OVER RUBBER TAPE.

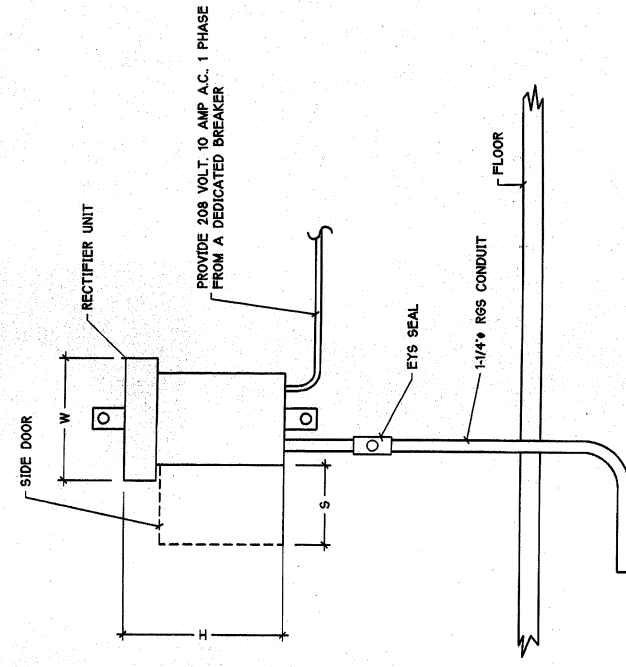
BOND CABLE SPLICE DETAIL



- NOTES:
 1. EACH BOND CONSISTS OF TWO PARALLEL CABLES SPACED 4-6" APART.
 2. REMOVE ANY COATING IN 3'x3' SECTION & FILE TO BRIGHT METAL.
 3. WELD BOND STRAP TO PIPE USING COPPER SLEEVES (AS REQUIRED). WELD METALS & MOLDS FOR THE PIPE AND WIRE SIZE BEING BONDED.
 4. REMOVE SLAG & TEST FOR SECURITY.
 5. APPLY MASTIC FILLED 'HANDI CAP' OVER WELD OR APPLY A PRIMER & TAPE COATING.
 6. BACK FILL CAREFULLY TO ENSURE WIRE IS NOT BROKEN OR DAMAGED.

TYPICAL BONDING DETAIL

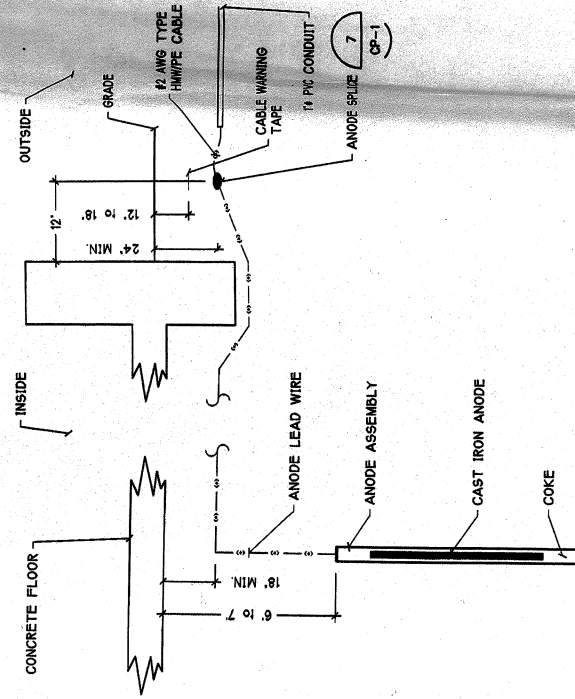




NOMINAL DIMENSIONS:
HEIGHT (H) : 32"
WIDTH (W) : 24"
DEPTH (D) : 18"
SIDE DOOR (S) : 15"
WEIGHT : 185 LBS

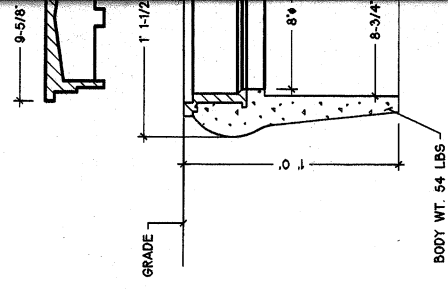
ANODE INSTALLATION DETAIL

1
CP-1



RECTIFIER INSTALLATION DETAIL

2
CP-1



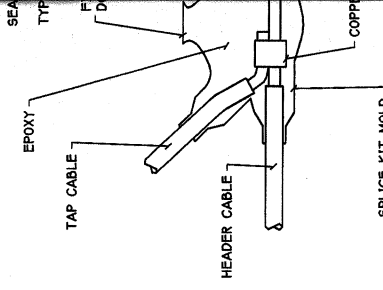
RING T
COPPER

TERMINAL	LEAD
1	TEST LEAD
2	IR FREE SENSOR
3	IR FREE SENSOR
4	SPARE
5	SPARE

NOTES:
1. PROVIDE BONDING STRAP BETWEEN
2. PROVIDE 5 TERMINALS MINIMUM.

TEST STATION

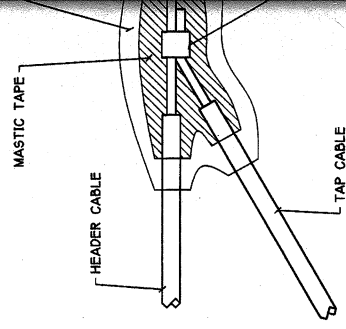
3
CP-1



NOTES:
1. DO NOT CUT THROUGH HEADER CABLE
2. EXPOSE ONLY SUFFICIENT CONDUCTOR
3. EPOXY STYLE SPLICE KIT SHOWN. OTHER
KITS ARE ACCEPTABLE.

ANODE SPLICE

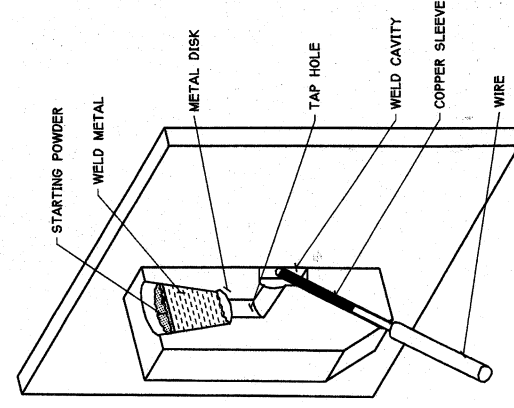
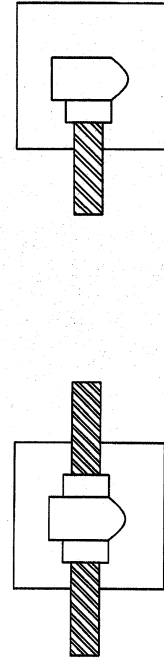
7
CP-1



NOTES:
1. DO NOT CUT THROUGH HEADER CABLE
2. EXPOSE ONLY SUFFICIENT CONDUCTOR
3. APPLY ELECTRICAL COATING OVER RUB

BOND CABLE SP

8
CP-1

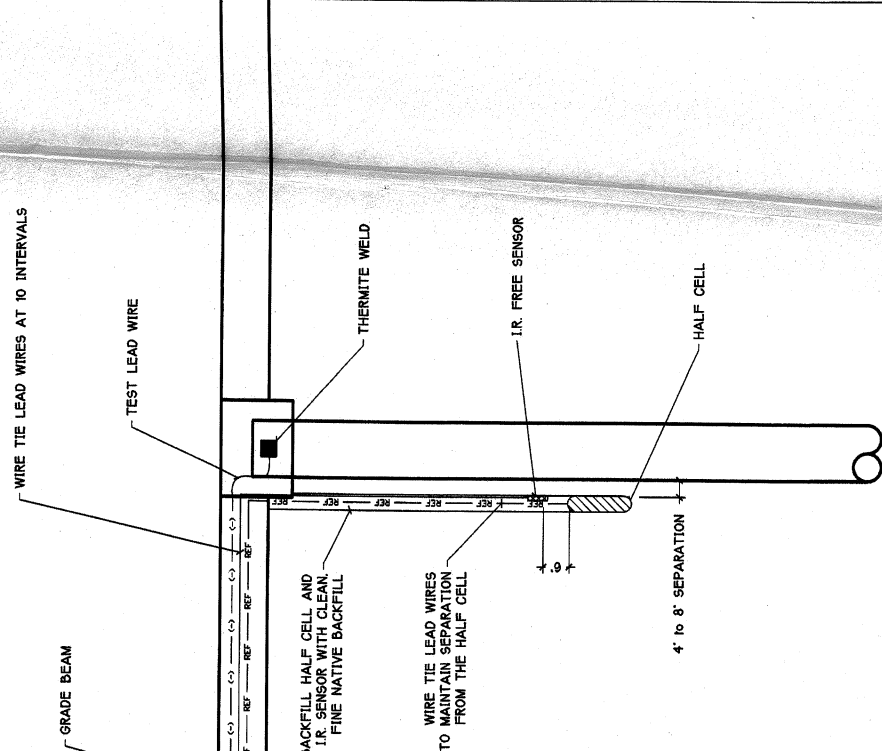


NOTES:
1. CLEAN WELD AREA TO BRIGHT METAL
2. WELD CABLE TO STRUCTURE USING 'COWELD' OR APPROVED
EQUAL EXOTHERMIC WELD
3. CLEAN SLAG FROM WELD AREA AND TEST FOR ADHESION.
4. COAT WELD WITH APPROVED COATING.

TYPE VS SHOWN

THERMITE WELD DETAIL

5
CP-1



PACKET/LL HALF CELL AND
IR. FREE SENSOR WITH CLEAN,
FINE NATIVE BACKFILL

WIRE TIE LEAD WIRES
TO MAINTAIN SEPARATION
FROM THE HALF CELL

HALF CELL/IR. FREE SENSOR
INSTALLATION DETAIL

5
CP-1