

SUN HEALTHCARE SYSTEMS, INC.
 CAMPUS: PHASE ONE
 ANACORTES, WASHINGTON

NOETON CORROSION LIMITED
 1000 1st St. N.E.
 Seattle, WA 98102
 (206) 461-1111

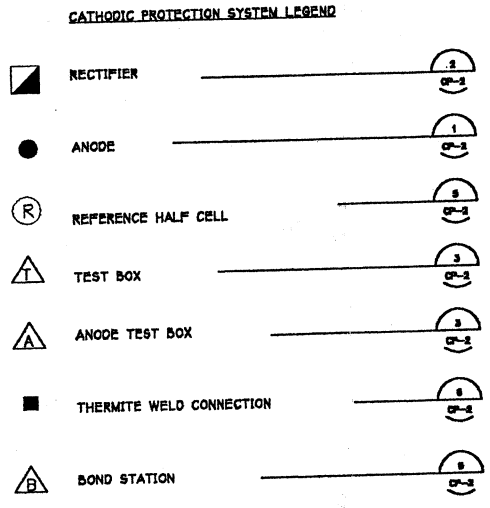
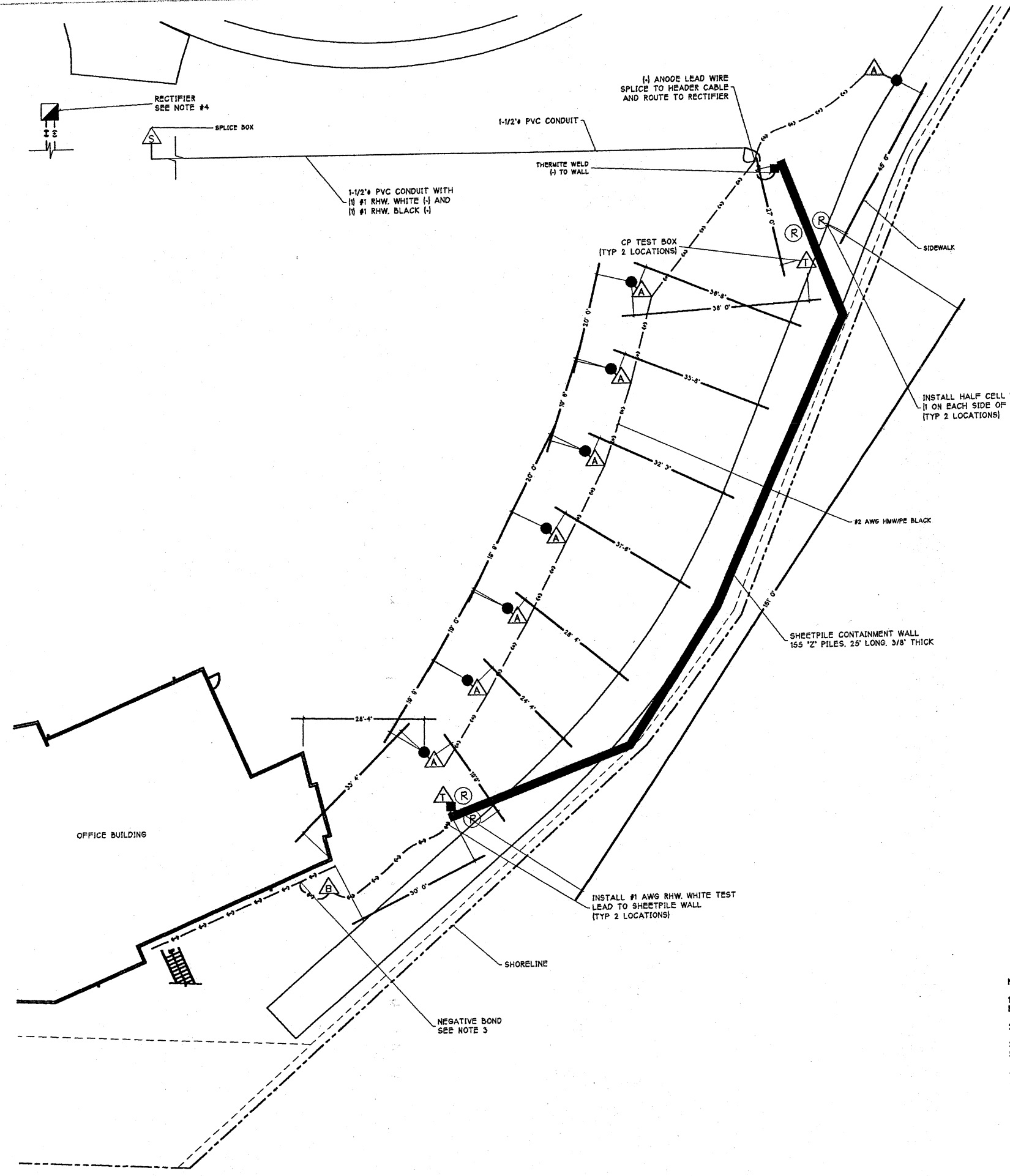
6/16/88 CONTROL SET
 12/17/88 AS-BUILT



**CONTAINMENT WALL
 CATHODIC PROTECTION
 SYSTEM LAYOUT AS-BUILT**

88060.00
 15853-pp3
 15853-pp3

CP-3



- NOTES:**
1. PROVIDE SLACK WIRE IN NEGATIVE HEADER CABLE TO 24" ABOVE GRADE. TERMINATE END OF CABLE IN CP TEST BOX WITH A WIRE NUT.
 2. MAINTAIN EQUAL SEPARATION FROM WALL WITH ALL ANODES. LOCATE OUTSIDE ANODE 1 FOOT OFF INSIDE OF CONCRETE WALKWAY.
 3. INSTALL NEGATIVE BOND WIRE USING #8 AWG HMW/PE CABLE. CRIMP LEAD WIRE TO NEGATIVE HEADER FOR FOUNDATION PILING CP SYSTEM (#2 AWG, RHW, WHITE).
 4. RECTIFIER IS TO BE MOUNTED ON AN EXTERIOR WALL IN ROOM 100 (BIKE STORAGE CLOSET), ADJACENT TO THE RECTIFIER FOR THE SUPPORT PILING CP SYSTEM.
 5. FIELD LOCATE 7 ANODES WEST OF BERM, BEHIND WALL IN LEVEL LAWN AREA.