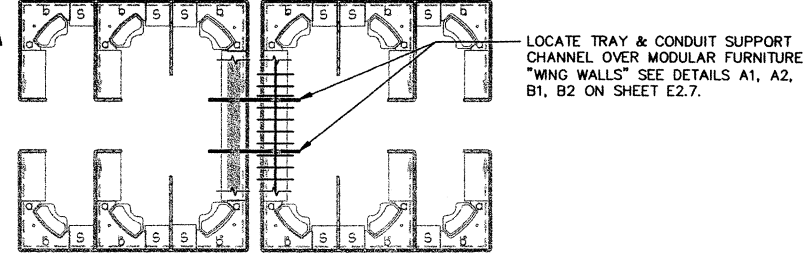


DATA ROOM MEZZANINE
SCALE: 1/8" = 1'-0"

LEGEND:
 'a' TECHNICAL POWER, CIRCUITS (& PHASE) PER PLANS & PANEL SCHEDULE
 'b' TECHNICAL POWER, SEE PLAN & PANEL SCHEDULE
 'c' STANDBY CIRCUIT, SEE PLAN & PANEL SCHEDULE



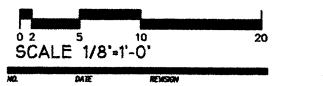
APPROXIMATE LOCATIONS OF TECHNICAL AND STANDBY POWER FOR MODULAR FURNITURE
SCALE: NONE

GENERAL NOTES

1. ALL CONDUIT HOMERUNS FOR A/V, TELECOMM, LIGHTING AND POWER SYSTEMS SHALL BE RUN IN THE UNISTRUT/CONDUIT ASSEMBLY AS NOTED AND SHOWN ON EACH FLOOR DRAWING.
2. PRIOR TO PERFORMING ROUGH-IN INSTALLATION WORK COORDINATE DEVICE LOCATIONS TO ARCHITECTURAL AND MECHANICAL DRAWINGS.
3. PLEASE REFER TO ARCHITECTURAL REFLECTED CEILING PLANS FOR COORDINATION WITH OTHER TRADES.

FLAG NOTES

- ▲ MOUNT PANEL N2S2 WITHIN 10 CONDUCTOR FEET FROM TRANSFORMER T2S2 ON FIRST FLOOR.
- ▼ FUSH FLOOR BOX PER SPECIFICATION SECTION 16601. INSTALL PER ARCHITECT'S DIRECTION.
- ▽ NOT USED.
- ▲ COORDINATE WITH TELECOMM FOR EXACT LOCATION PRIOR TO PERFORMING ROUGH-IN INSTALLATION.
- ▼ PROVIDE POKE THRU W/ PEDESTAL TYPE SERVICE FITTING(S) TO ACCOMMODATE (2) NEMA L6-30 TYPE RECEPTACLE.
- ◻ FLUSH FLOOR BOX PER SPECIFICATION SECTION 16601. INSTALL AT EXACT LOCATION PER A/V DRAWINGS.



5/18/99 CONST. SET

DOUG BORS
 BILL VAN VLACK, PE
 ED SANTOS



POWER PLAN
SECOND FLOOR

98060
 DATE PLOTTED: FEBRUARY 9, 1999
 SHEET NO: 7651
 SCALE: 1/8" = 1'-0"

E2.2