

- GENERAL NOTES:**
- WHERE HASHMARKS ON RACEWAYS ARE NOT SHOWN REFER TO CIRCUIT SCHEDULE ON DWG.
 - PLEASE REFER TO ARCHITECTURAL REFLECTED CEILING PLANS FOR COORDINATION WITH OTHER TRADES.
- FLAG NOTES:**
- PROVIDE VERTICAL RACK SUPPORT, SEISMIC RATED FOR DISCONNECT AND RECEPTACLE (WHERE INDICATED)

CIRCUIT SCHEDULE

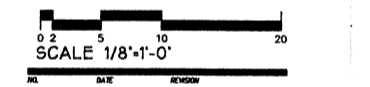
EQUIPMENT TAG	EQUIPMENT LABEL	VOLT	PH	HP	KW	PANEL	CIRCUIT #	CB DISC, FUSE	RACEWAY SIZE	CONDUCTORS PHASE	NEUTRAL	GROUND	NOTES	E DWG
AC-2	DATA CENTER A/C UNIT	480	3	5	27.4	N4S1	14,16,18		1 1/4"	3#8	-	1#10	2.4	E2.3
AC-3	DATA CENTER A/C UNIT	480	3	3	18.3	N4S2	20,22,24		3/4"	3#10	-	1#10	2.4	E2.3
EF-1	EXHAUST - SHOULDER NORTH	115	1	0.25	0.7	N2C1	26		3/4"	1#10	1#10	1#10	4.7,9	E2.3
EF-4	TOILET EXHAUST - SHOULDER	120	1	1/60		N2S2	10		3/4"	1#12	1#12	1#12	4.7,9	E2.3
EF-5	TOILET EXHAUST - WRIST	120	1	0.5	1.2	N2W2	7		3/4"	1#12	1#12	1#12	4.7,9	E2.3
EF-6	TOILET EXHAUST-SHOULDER	120	1	0.05		N2S2	10		3/4"	1#12	1#12	1#12	4.7,9	E2.3

- FAN IS 277V, 1 PHASE
- PROVIDE LOCKABLE SAFETY DISCONNECT
- PROVIDE FUSIBLE DISCONNECT
- SEE PANEL SCHEDULE FOR CIRCUIT BREAKER SIZE
- SEE DRAWING ED.1 FOR FEEDER SIZE.
- COORDINATE LOCATION W/ MECHANICAL ACCESS PANEL.
- PROVIDE MANUAL STARTER W/ IN-LINE CONTACTOR AND INTERTIE TO DDC FOR CONTROL.
- WATER HEATER W/ (2) HEAT ELEMENTS (NON-SIMULTANEOUS, SINGLE ELECT. CONNECTION).
- WITHIN SITE OF DEVICE



SPARLING
ELECTRICAL ENGINEERING,
LIGHTING DESIGN &
TECHNOLOGY CONSULTING
720 OLIVE WAY - SUITE 1100
SEATTLE, WA 98101-1853
FAX 206-667-0554
PHONE 206-667-0555

SUN HEALTHCARE SYSTEMS, INC.
CAMPUS: PHASE ONE
ANACORTES, WASHINGTON



5/18/99 CONST. SET

DOUG BORS
BILL VAN VLACK, PE
ED SANTOS



POWER PLAN
ROOF

98060
DATE PROJECT OR
FEBRUARY 9, 1999
DWG NO.
7651
DRAWING PROJECT NO.
1/8" = 1'-0"
SCALE

E2.3

CONSTRUCTION SET