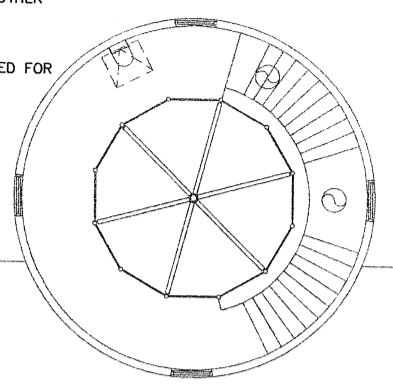


- GENERAL NOTES:**
- WHERE HASHMARKS ON RACEWAYS ARE NOT SHOWN REFER TO CIRCUIT SCHEDULE ON DWG.
 - PLEASE REFER TO ARCHITECTURAL REFLECTED CEILING PLANS FOR COORDINATION WITH OTHER TRADES.
- FLAG NOTES:**
- PROVIDE VERTICAL SUPPORT SEISMIC RATED FOR DISCONNECT AND RECEPTACLE.



CIRCUIT SCHEDULE

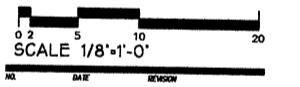
EQUIPMENT TAG	EQUIPMENT LABEL	VOLT	PH	HP	KW	PANEL	CIRCUIT #	CB	STARTER SIZE	RACEWAY SIZE	CONDUCTORS	NEUTRAL	GROUND	NOTES
AC-1	MAIN HVAC UNIT	480	3			DP2S								5
WH-2	WATER HEATER WH-2	208	1		4.5	N2S2	1,3			3/4"	2#10			
TB-221	TB-221	480	3	1/4	10.0	N4E1	31,33,35	30AS,15AF		3/4"	3#10	1-#10	1#10	1,3,6,9
TB-222	TB-222	480	3	1/6	5.0	N4E1	31,33,35	30AS,15AF		3/4"	3#10	1-#10	1#10	1,3,6,9
TB-223	TB-223	480	3	1/6	4.0	N4E1	32,34,36	30AS,15AF		3/4"	3#10	1-#10	1#10	1,3,6,9
TB-225	TB-225	480	3	1/6	3.0	N4E1	32,34,36	30AS,15AF		3/4"	3#10	1-#10	1#10	1,3,6,9
TB-227	TB-227	480	3	1/6	4.0	N4E1	32,34,36	30AS,15AF		3/4"	3#10	1-#10	1#10	1,3,6,9
TB-228	TB-228	480	3	1/4	3.0	N4E1	37,39,41	30AS,15AF		3/4"	3#10	1-#10	1#10	1,3,6,9
TB-229	TB-229	480	3	1/6	3.0	N4E1	37,39,41	30AS,15AF		3/4"	3#10	1-#10	1#10	1,3,6,9
TB-230	TB-230	480	3	3/4	10.0	N4E1	37,39,41	30AS,20AF		3/4"	3#10	1-#10	1#10	1,3,6,9
TB-232	TB-232	480	3	1/3	11.0	N4E1	19,21,23	30AS,20AF		3/4"	3#10	1-#10	1#10	1,3,6,9
TB-233	TB-233	480	3	1/3	6.0	N4E1	19,21,23	30AS,15AF		1"	3#10	1-#10	1#10	1,3,6,9
TB-234	TB-234	480	3	1/3	10.0	N4E1	20,22,24	30AS,20AF		1"	3#10	1-#10	1#10	1,3,6,9
TB-235	TB-235	480	3	1/6	1.0	N4E1	25,27,29	30AS,15AF		1"	3#10	1-#10	1#10	1,3,6,9
TB-237	TB-237	480	3	1/4	8.0	N4E1	20,22,24	30AS,15AF		3/4"	3#10	1-#10	1#10	1,3,6,9
TB-238	TB-238	480	3	1/6	1.0	N4E1	19,21,23	30AS,15AF		3/4"	3#10	1-#10	1#10	1,3,6,9
TB-239	TB-239	480	3	1/6	1.0	N4E1	25,27,29	30AS,15AF		1"	3#10	1-#10	1#10	1,3,6,9
TB-241	TB-241	480	3	3/4	14.0	N4E1	25,27,29	30AS,20AF		1"	3#10	1-#10	1#10	1,3,6,9
TB-242	TB-242	480	3	1/3	5.0	N4E1	26,28,30	30AS,15AF		3/4"	3#10	1-#10	1#10	1,3,6,9
TB-243	TB-243	480	3	1/3	10.0	N4E1	26,28,30	30AS,10AF		3/4"	3#10	1-#10	1#10	1,3,6,9
TB-244	TB-244	480	3	1/6	3.0	N4S1	13,15,17	30AS,15AF		3/4"	3#12	1-#10	1#12	1,3,6,9

- FAN IS 277V, 1 PHASE
- PROVIDE LOCKABLE SAFETY DISCONNECT
- PROVIDE FUSIBLE DISCONNECT
- SEE PANEL SCHEDULE FOR CIRCUIT BREAKER SIZE
- SEE DRAWING E0.1 FOR FEEDER SIZE
- COORDINATE LOCATION W/ MECHANICAL ACCESS PANEL
- PROVIDE MANUAL STARTER W/ IN-LINE CONTACTOR AND INTERIE TO DDC FOR CONTROL
- WATER HEATER W/ (2) HEAT ELEMENTS (NON-SIMULTANEOUS, SINGLE ELECT. CONNECTION)
- WITHIN SITE OF DEVICE

MITHUN PARTNERS
 ARCHITECTURE
 PLANNING &
 INTERIOR DESIGN

SPARLING
 ELECTRICAL ENGINEERING,
 LIGHTING DESIGN &
 TECHNOLOGY CONSULTING
 720 OLIVE WAY - SUITE 1100
 SEATTLE, WA 98101-1859
 FAX 206-667-0554
 PHONE 206-667-0555

SUN HEALTHCARE SYSTEMS, INC.
 CAMPUS: PHASE ONE
 ANACORTES, WASHINGTON



5/18/99 CONST. SET

DOUG BORS
 PROJECT ENGINEER
BILL VAN VLACK, PE
 PROJECT ENGINEER
ED SANTOS
 PROJECT ENGINEER



**MECHANICAL
 POWER PLAN
 SECOND FLOOR**

98060
 DATE PLOTTED: FEBRUARY 9, 1999
 SHEET NO. 7651
 DRAWING PROJECT NO. 1/8" = 1'-0"

E2.5

CONSTRUCTION SET

S:\1701\MECH\BWA\WALL\E2.5.DWG 11:24:30 PM 01: D.V.