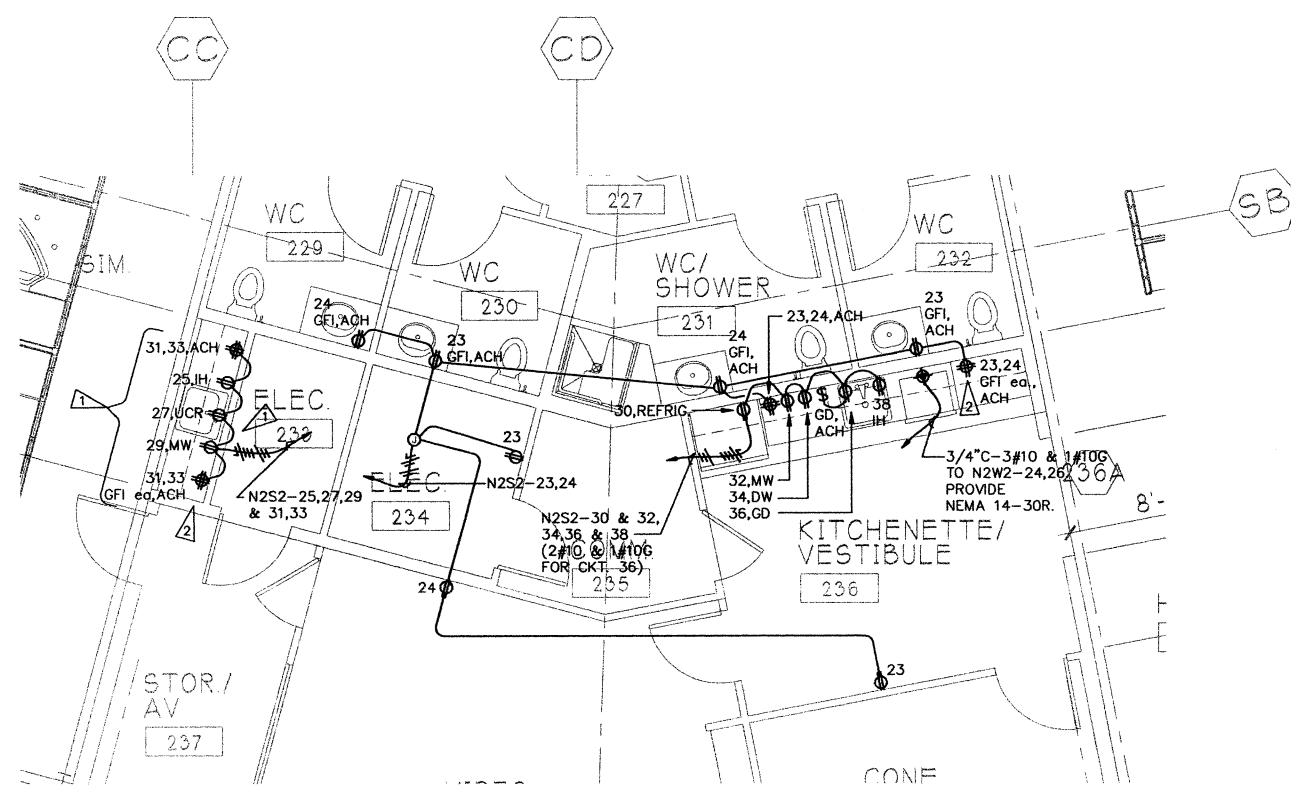


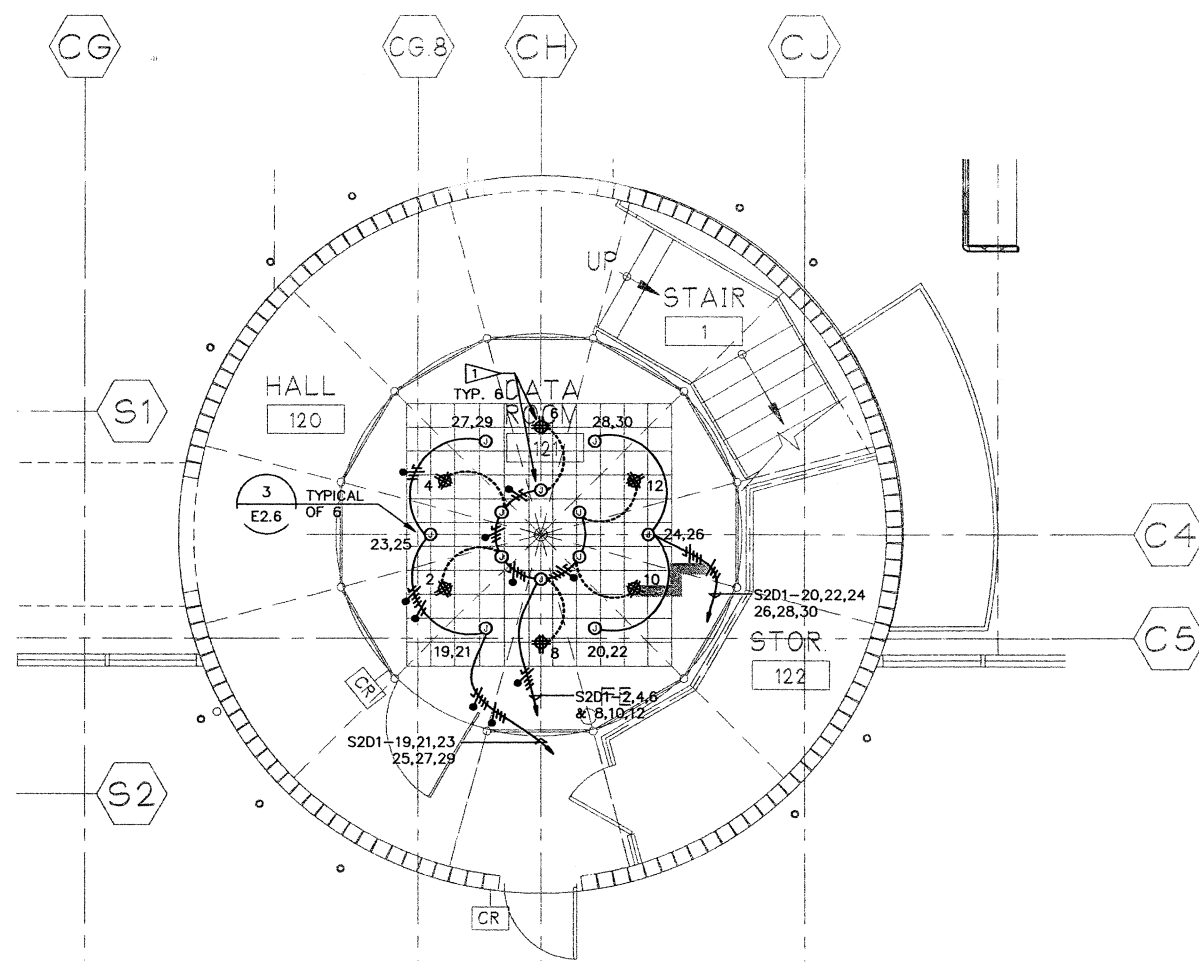
**A ENLARGED PARTIAL PLAN - LOUNGE 114**  
 SCALE: 1/4" = 1'-0"

- FLAG NOTES:**
- VERIFY EXACT MOUNTING HEIGHT AND LOCATION OF DEVICE(S) SHOWN W/ARCHITECT AND/OR ARCH. DRAWINGS PRIOR TO PERFORMING ROUGH-IN INSTALLATION.
  - PROVIDE GFCI DOWNSTREAM PROTECTION TO DEVICES WIRED ON SAME CIRCUIT AND ONLY WITHIN SAME SPACE DOWNSTREAM.
  - PROVIDE "WET LOCATION" WALL COVER PLATES FOR RECEPTACLE IF REQUIRED TO BE "CORD AND PLUG" AND NOT "DIRECT WIRE" CONNECTION.



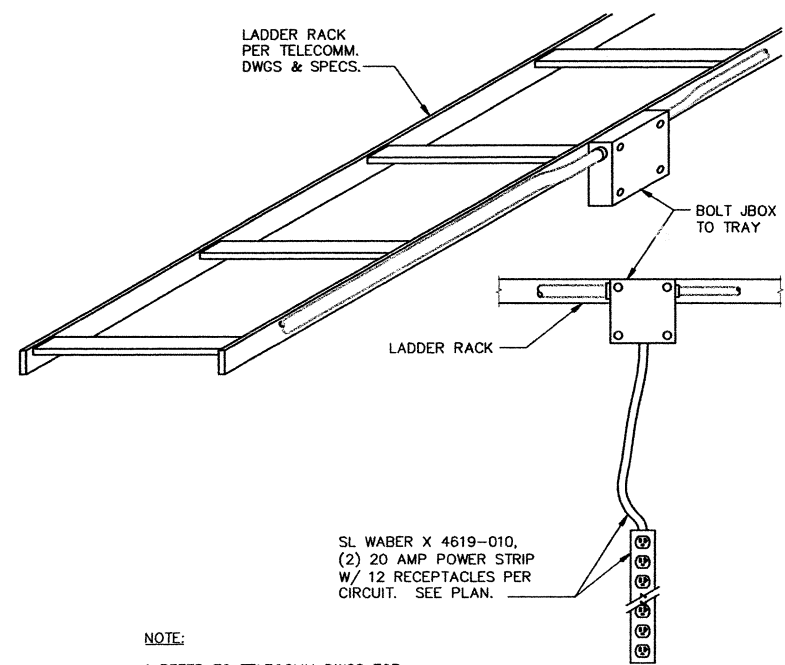
**C ENLARGED PARTIAL PLAN - COFFEE STATION (SOUTH) AND KITCHENETTE/VESTIBULE - 236**  
 SCALE: 1/4" = 1'-0"

- GENERAL NOTE:**
- PLEASE REFER TO ARCHITECTURAL REFLECTED CEILING PLANS FOR COORDINATION WITH OTHER TRADES.

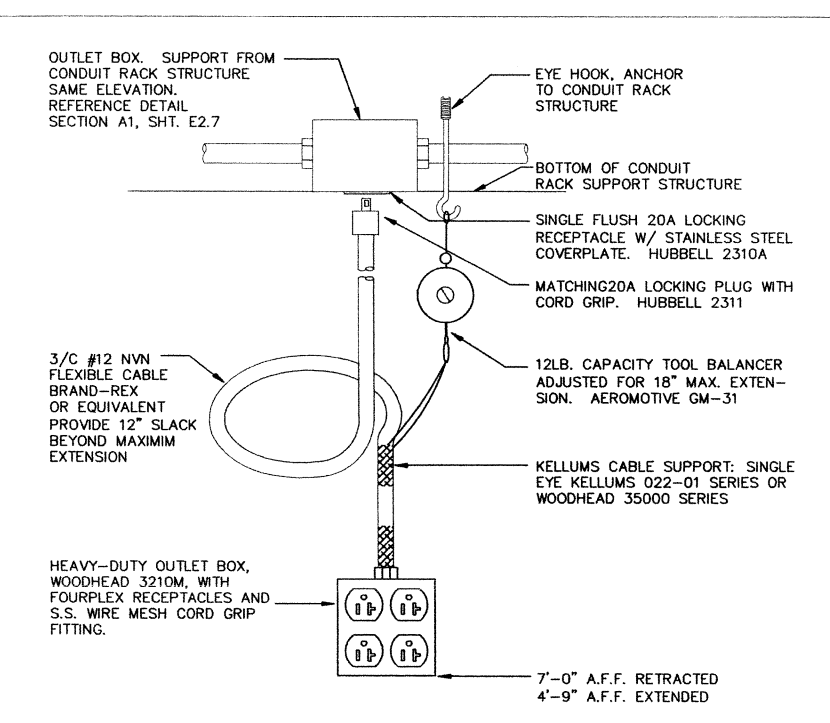


**B ENLARGED PARTIAL PLAN - DATA ROOM 121**  
 SCALE: 1/4" = 1'-0"

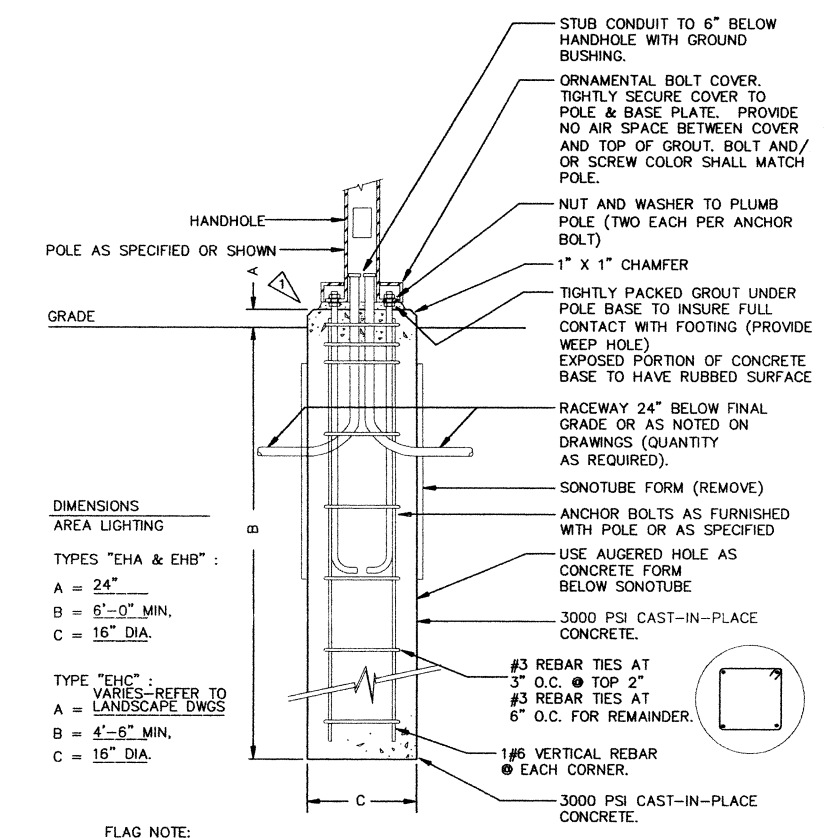
- FLAG NOTES:**
- PROVIDE NEMA 5-20 TYPE RECEPTACLES IN 4" SQUARE BOX WITH 42" LONG FLEXIBLE METALLIC CONDUIT AND CONNECT TO JUNCTION BOX AND RACEWAY SYSTEM UNDER RAISED FLOOR.
  - NOTE: COORDINATE WITH ARCHITECT/OWNER EXACT LOCATION OF JUNCTION BOX PRIOR TO ROUGH-IN INSTALLATION.



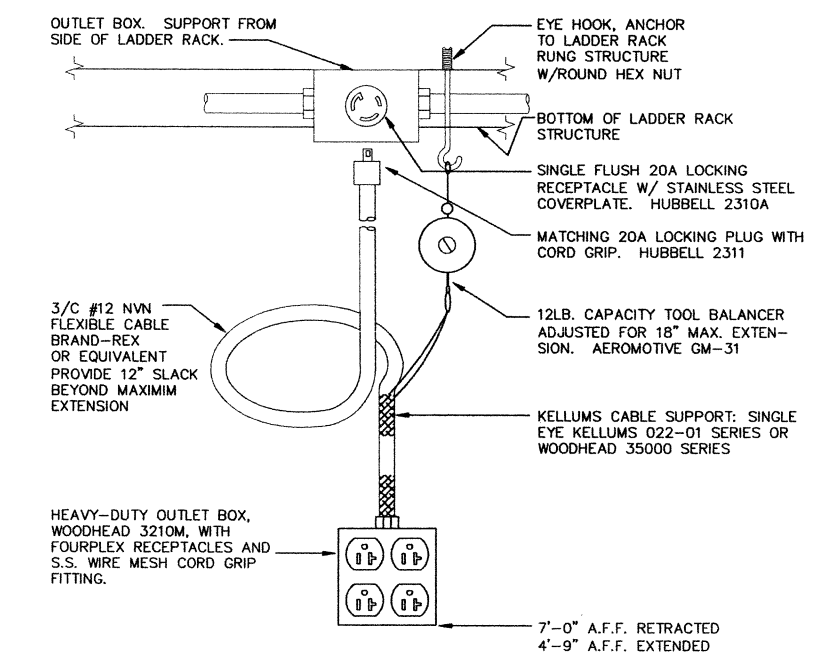
**DETAIL 3**  
 SCALE: NOT TO SCALE  
 E2.2, E2.6



**1 TYPE 1 CORD DROP DETAIL**  
 SCALE: NOT TO SCALE  
 E2.1, E2.6



**2 POLEBASE DETAIL FOR FIXTURE TYPES 'EHA, EHB' AND 'EHC'**  
 SCALE: NOT TO SCALE  
 E2.7



**4 TYPE 2 CORD DROP DETAIL**  
 SCALE: NOT TO SCALE  
 E2.2, E2.6