

**LINE TABLE**

NUMBER	DIRECTION	DISTANCE
L1	S 02°37'20" W	80.00'
L2	S 87°20'42" E	40.00'
L3	S 87°20'52" E	40.00'
L4	N 02°37'20" E	29.74'
L5	S 87°09'42" E	16.72'
L6	N 02°50'02" E	50.00'
L7	N 02°03'33" E	26.12'
L8	N 18°02'40" E	19.88'
L9	S 87°56'27" E	34.42'
L10	N 32°11'29" E	44.76'
L11	N 21°55'20" E	115.13'
L12	N 37°09'40" E	37.93'
L13	N 47°59'21" E	146.34'
L14	N 02°03'33" E	24.00'
L15	S 87°56'27" E	10.00'
L16	N 02°03'33" E	27.32'
L17	N 87°25'12" W	37.35'
L18	N 02°50'02" E	9.72'
L19	S 85°38'17" E	13.91'
L20	N 87°21'18" W	11.15'
L21	S 02°38'55" W	30.00'

**CURVE TABLE**

NUMBER	RADIUS	LENGTH	DELTA
C1	25.00	39.30	90°04'22"
C2	25.00	39.24	89°55'38"
C3	35.00	54.86	89°48'37"
C4	25.00	31.39	71°56'48"
C5	25.00	9.63	22°04'14"
C6	25.00	39.35	90°11'23"
C7	45.00	17.67	22°30'04"
C8	101.98	28.45	15°59'07"
C9	45.00	58.13	74°00'53"
C10	50.00	78.54	90°00'00"

- LEGEND**  
FOR SHEETS: L1.0, L1.1, L1.2, L2.1 AND L2.2
- EXISTING CONTOUR
  - CHWM ORDINARY HIGH WATER MARK
  - MLLW MEAN LOWER LOW WATER
  - X—X EXISTING FENCELINE
  - P EXISTING POWER
  - SS EXISTING SANITARY SEWER
  - C EXISTING GAS
  - CATV EXISTING TV
  - W EXISTING WATER
  - PH EXISTING TELEPHONE
  - TR EXISTING TELEPHONE RISER
  - S EXISTING STORM MANHOLE
  - T EXISTING TEST WELL

- ① NEW ASPHALT PAVING - SEE CIVL
- ② LANDSCAPE AREA - SEE L2.1 FOR CONTOUR GRADING
- ③ CONCRETE WALKWAY (4) (L5.1)
- ④ REINFORCED CONCRETE SLAB (5) (L5.1)
- ⑤ CONCRETE ESPALANADE (2) (L5.1)
- ⑥ REINFORCED TURF PAVEMENT (1) (L5.1)
- ⑦ CONC. SURFACING W/ PLANTED JOINTS (10) (L5.1)
- ⑧ (4) ACCESSIBLE PARKING STALLS
- ⑨ (1) VAN ACCESSIBLE PARKING STALL

- PROPOSED CONTOUR
- 18.65 PROPOSED SPOT ELEVATION
- TW TOP OF WALL
- BW BOTTOM OF WALL
- TS TOP OF STAIR/STEP
- BS BOTTOM OF STAIR/STEP
- TR TOP OF RAMP
- BR BOTTOM OF RAMP
- TC TOP OF CURB
- BC BOTTOM OF CURB
- RE RIM ELEVATION
- FF FINISH FLOOR

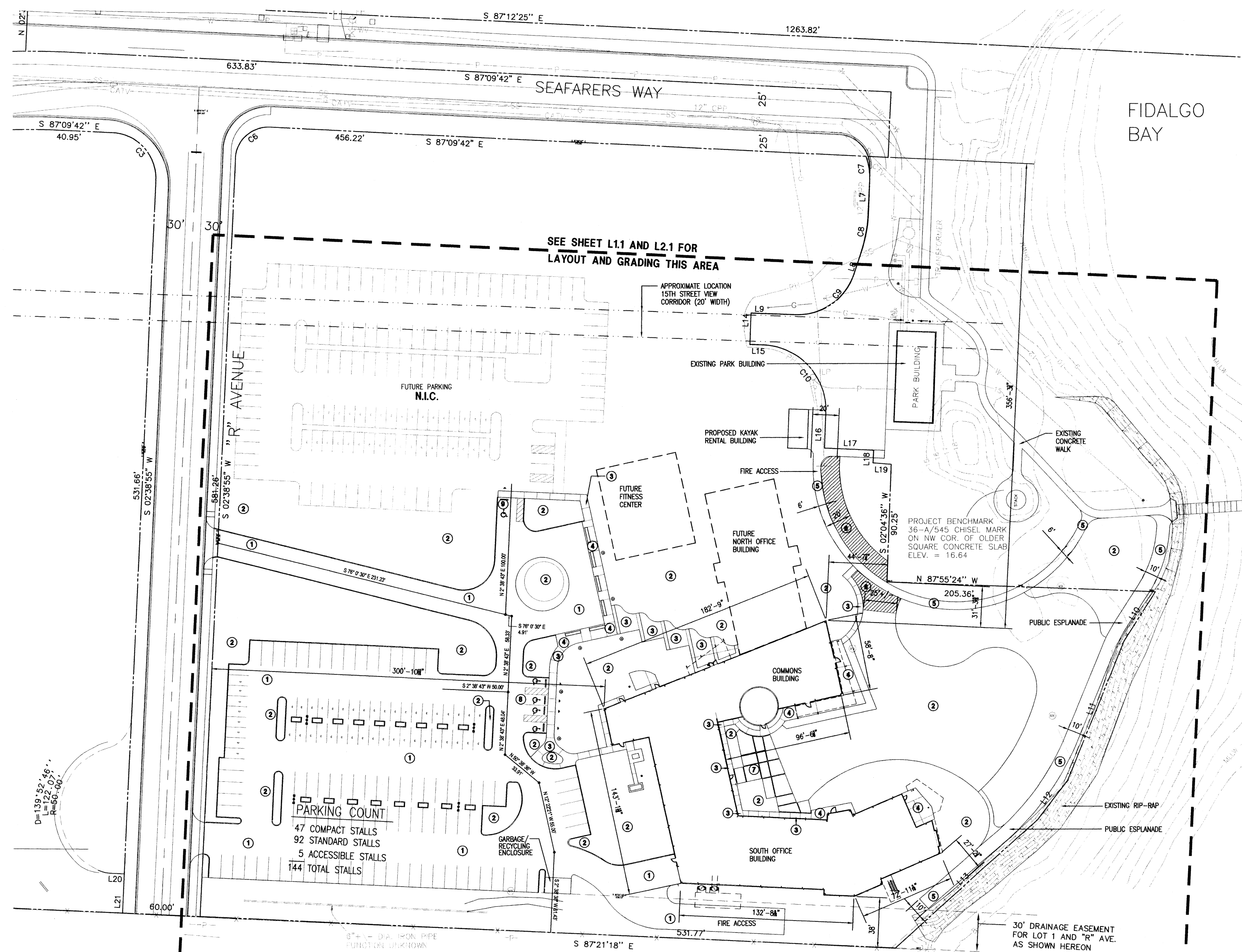
NO.	DATE	REVISION



**SITE PLAN & LEGEND**

98060.00  
MAY 18, 1999  
E1

**L1.0**  
CONSTRUCTION SET



**SEE SHEET L1.1 AND L2.1 FOR LAYOUT AND GRADING THIS AREA**

SURVEY AND BASE INFORMATION PROVIDED BY  
LEONARD, BOUDINOT & SKODJE, INC.  
PROFESSIONAL ENGINEERS AND LAND SURVEYORS  
SOUTH BASIN PROPERTY FOR THE PORT OF ANACORTES  
PRELIMINARY SITE TOPOGRAPHY DATED SEPT. 1998

