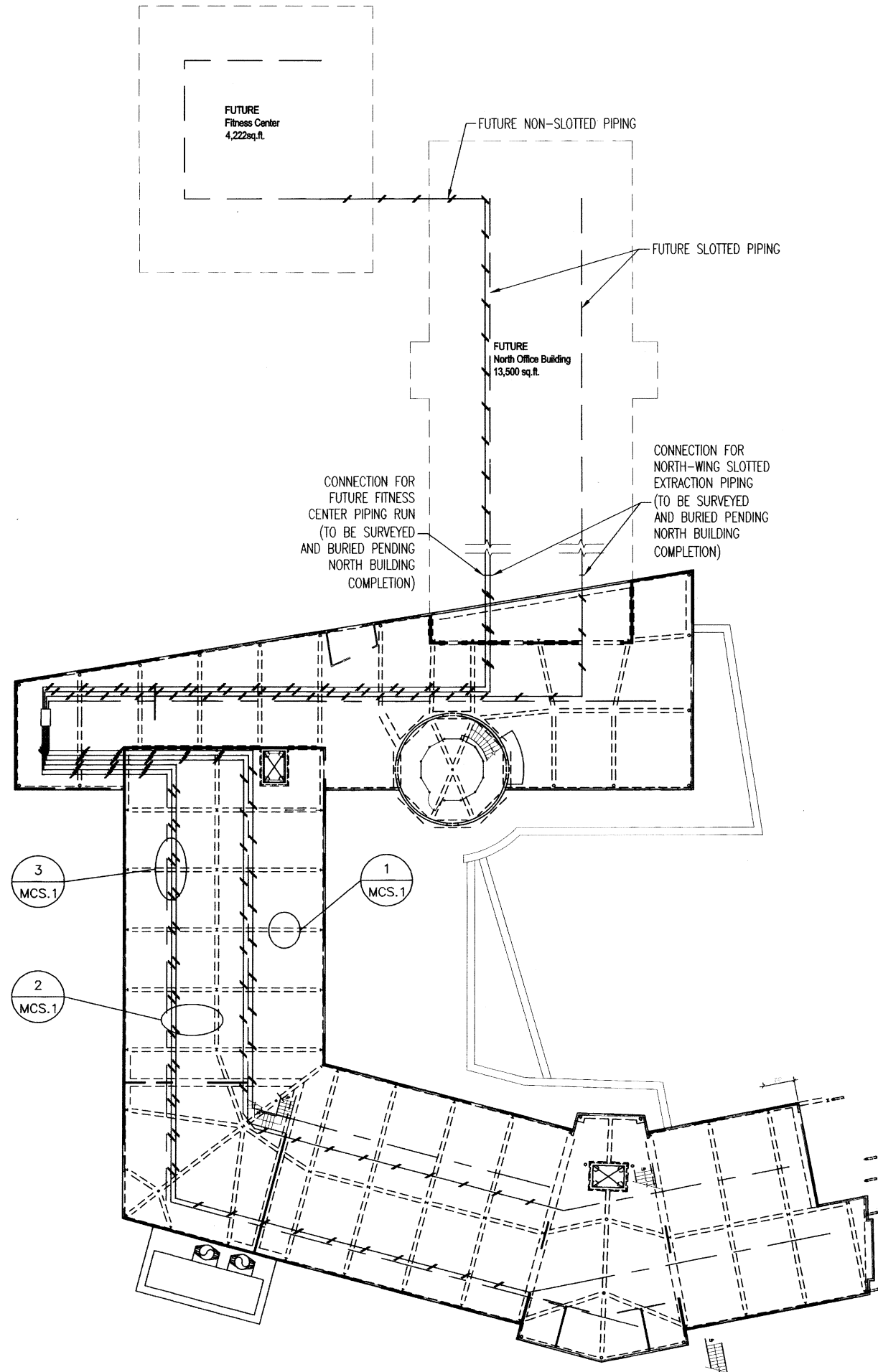


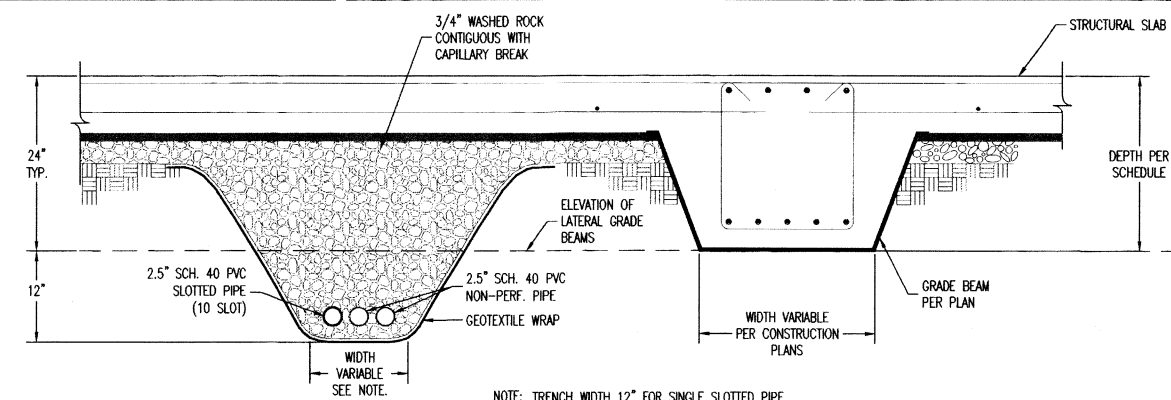
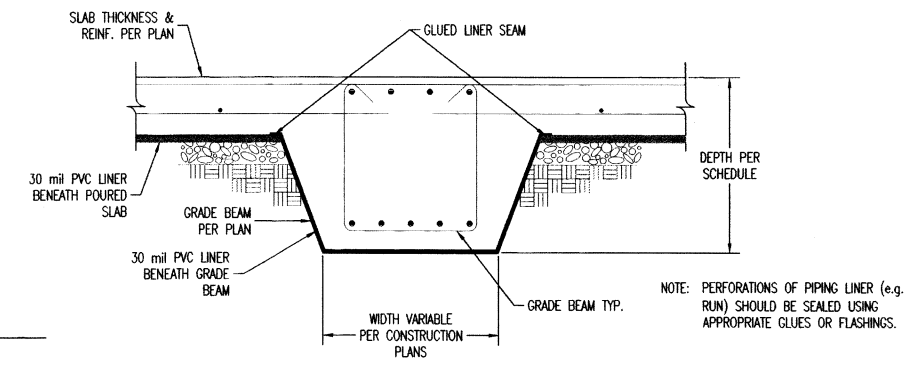
NOTES:  
PIPING TO ENTER BIKE STORAGE ROOM THROUGH 4'-4" x 6" FLOOR CUT-OUT PRIOR TO CONNECTION OF INDIVIDUAL PIPES TO MANIFOLD. PIPING TO TERMINATE AT MANIFOLD (6-INCH PVC WITH TEES AND PLUGS) ALONG THE EAST INTERIOR WALL OF THE BIKE-STORAGE ROOM. MANIFOLD TO BE CONNECTED TO ONE 2HP 100-200 CFM REGENERATIVE BLOWER, WITH KNOCKOUT, P/V RELIEF, SILENCER, STAND, AND MOTOR CONTROL BOX. MANIFOLD BLOWER AND EQUIPMENT TO BE CONTAINED WITHIN EXPLOSION PROOF CABINET. EXHAUST FROM BLOWER TO EXTERNAL ROOF STACK.

PIPING TO BE PLACED IN COMMON TRENCHES AS SHOWN IN DETAIL EXCEPT WHERE SEPARATED BY GRADE BEAMS PARALLEL TO PIPING RUNS.

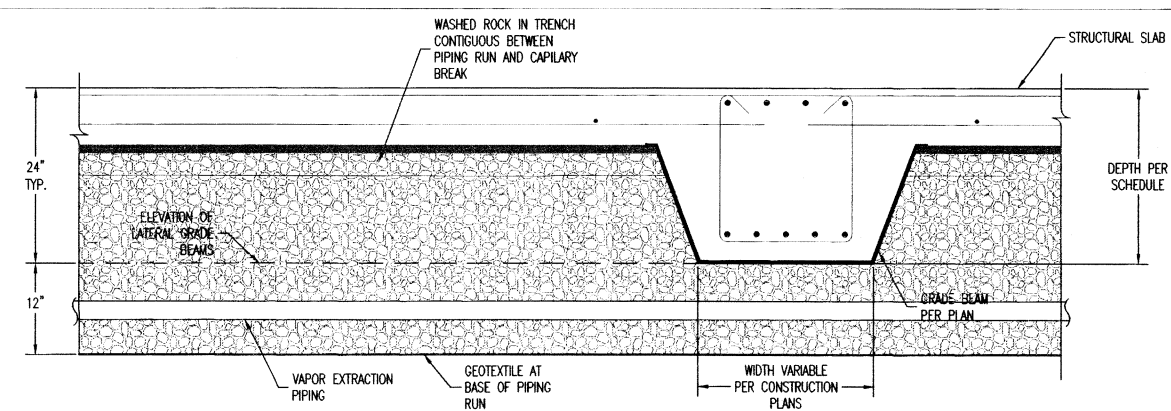
- LEGEND
- SLOTTED EXTRACTION PIPING (2.5 INCH SCH. 40 PVC)
  - - - NON-SLOTTED PIPING (2.5 INCH SCH. 40 PVC)
  - ===== FOUNDATION GRADE BEAMS PER STRUCTURAL DRAWINGS



1 LINER DETAIL  
MCS.1



2 EXTRACTION PIPING TRENCH CROSS-SECTION DETAIL  
MCS.1



3 PIPE TRENCH - GRADE BEAM CROSSING DETAIL  
MCS.1

BG  
PARTIAL IN CHARGE  
ML  
PROJECT MANAGER  
DAS/DWG  
PROJECT MANAGER  
THERMORETEC



METHANE CONTROL SYSTEM

98060.00  
PROJECT NO.  
MAY 18, 1999  
DATE

MCS.1  
SHEET NUMBER  
BID SET