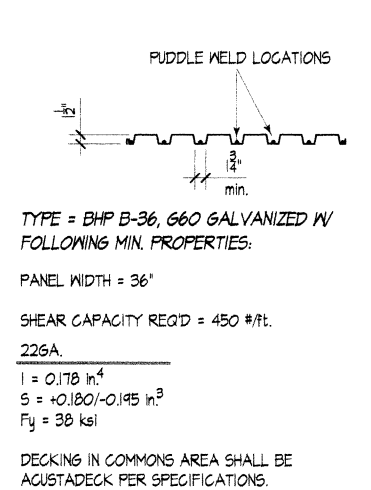
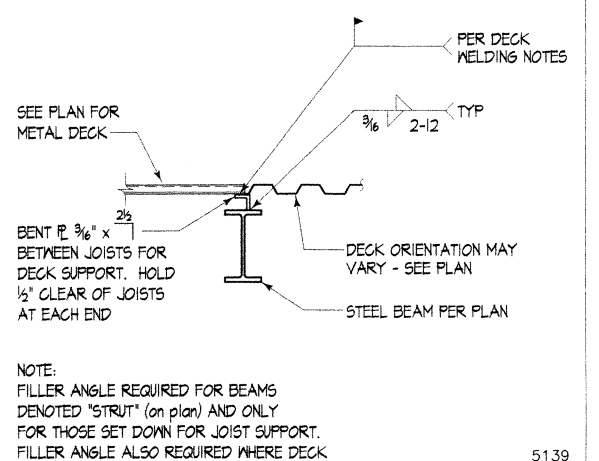


1	2	3	4	5139 4
7	8	9	5140 17	4203 18
13	14	15	5167 23	5167 24
19	20	21	22	23
25	26	27	28	29
				30

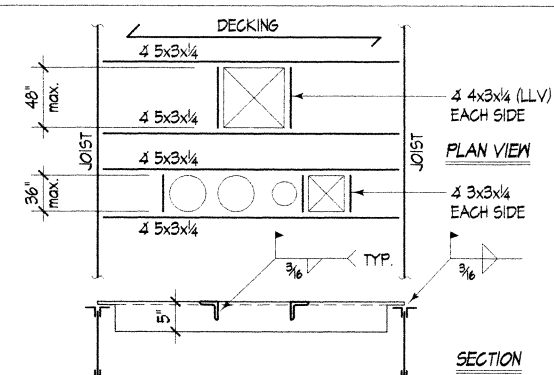


- 1. MAXIMUM DECK SPAN = 8'-0" c. to c. (TWO OR MORE CONTINUOUS SPANS). USE HEAVIER GAGE WHERE DECK REQ'D TO SIMPLE SPAN OVER T-0' c. to c.
- 2. PROVIDE (7) 1/2" DIAMETER RIDDLE WELDS PER SHEET TO ALL SUPPORTS PERPENDICULAR TO DECK FLUTES.
- 3. PROVIDE 1/2" DIAMETER RIDDLE WELDS AT 18"oc TO ALL STRUTS PARALLEL TO DECK FLUTES. PROVIDE 1/2" DIAMETER RIDDLE WELDS @ 18"oc WHERE DECK ORIENTATION CHANGES AND OTHER SUPPORTS PARALLEL TO DECK FLUTES.
- 4. CONNECT DECK SEAMS WITH BUTT FINCHES @ 12"oc.
- 5. DECK TYPE MUST STRICTLY MEET CRITERIA LISTED ABOVE, INCLUDING I.G.B.O. RESEARCH REPORT ALLOWABLE SHEAR LOADS. SUBMIT DECK INFORMATION TO ENGINEER PRIOR TO BEGINNING SHOP DRAWINGS.
- 6. REINFORCE MISCELLANEOUS DECK OPENINGS PER 12/51.

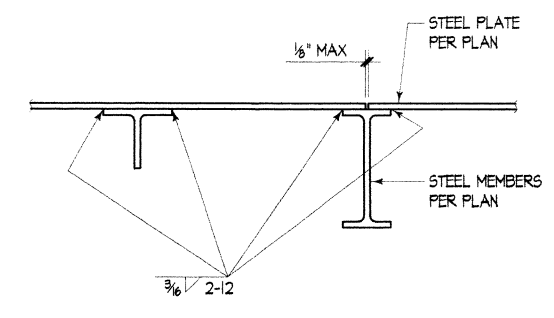
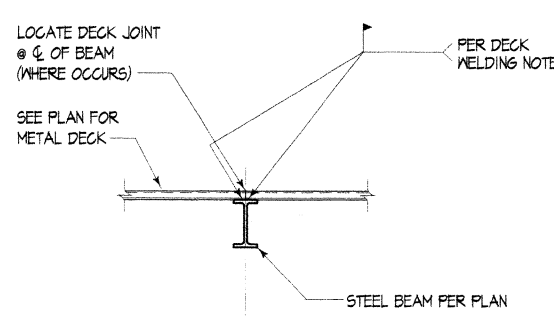
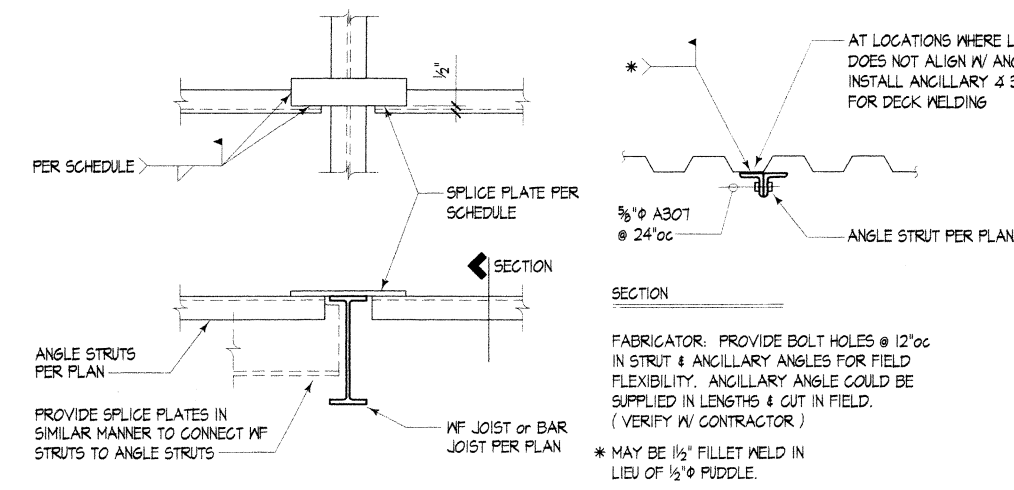
ANGLE STRUT SCHEDULE

LOAD	ANGLE SIZE	SPLICE PLATE	SPLICE PLATE WELD
UP TO 18k	4 2 1/2 x 2 1/2 x 1/4"	1/2" x 3 1/2"	3/8" x 7" TOTAL LENGTH

* 4 5 x 3 3/4" WHERE OCCURS ADJACENT TO LH JOIST BEARING SEAT.



- NOTES:
- 1. WELD DECK TO ANGLES W/ 1/2" RIDDLE WELDS @ 6"oc ALL AROUND.
 - 2. NO REINF. IS REQUIRED FOR SINGLE OPENINGS 4"ø OR 4"ø OR LESS.
 - 3. LARGER OPENINGS MUST BE COORDINATED W/ ARCHITECT & ENGINEER.



DATE: 5/18/99
REVISION: CONSTRU. SET

JEC
BTL
CSD
HRB
JEC
DETAILED

COUGHLIN PORTER LUNDEEN
4 COMMERCE STRUC. BLDG. 2100 UNIVERSITY AVENUE
210 PINE STREET, SUITE 300 SEATTLE, WA 98101
206.343.9360 206.343.9361

JAMES E. COUGHLIN
REGISTERED PROFESSIONAL ENGINEER
EMPLOYED 7/20/98

**DECKING
DETAILS**

98-0027-04
MAY 18, 1999

S5.1 CONSTRUCTION SET

Project: SUN HEALTHCARE CAMPUS PHASE ONE ANACORTES, WA. Draw: S5-1182-AUG. Date: 5/18/99. Scale: 1/8" = 1'-0".