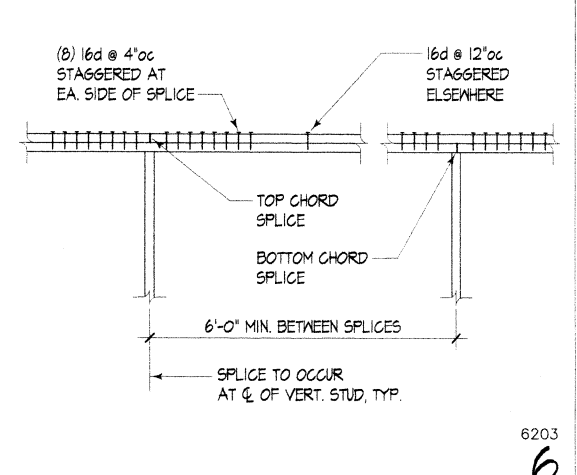
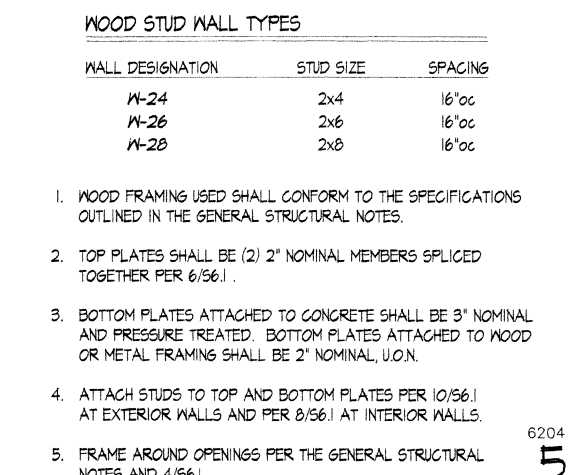
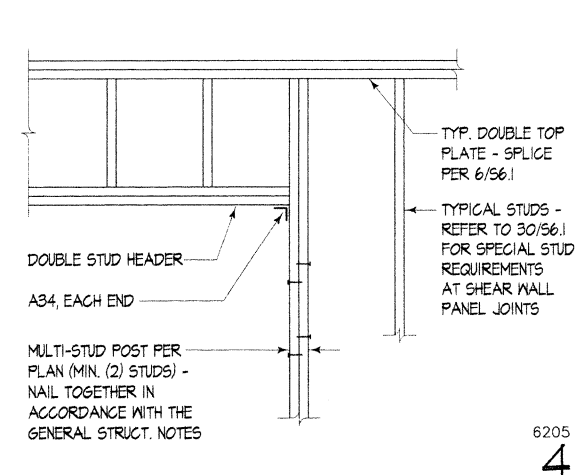
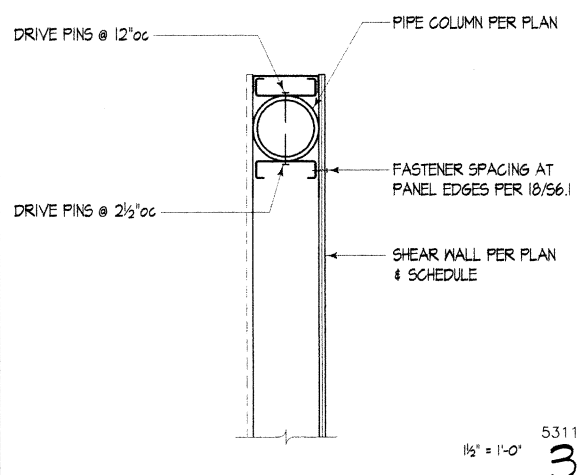
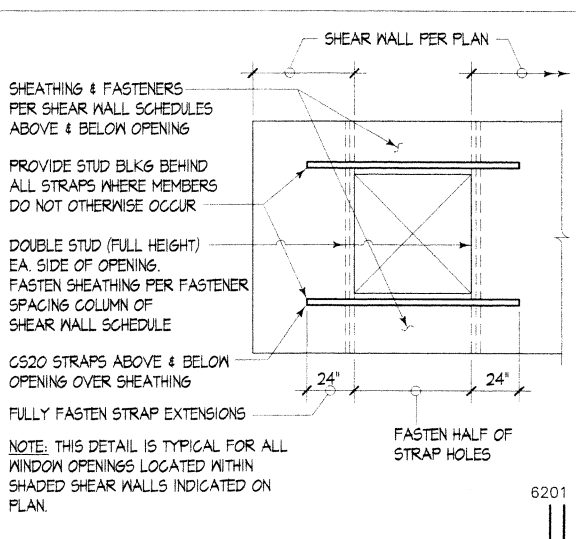
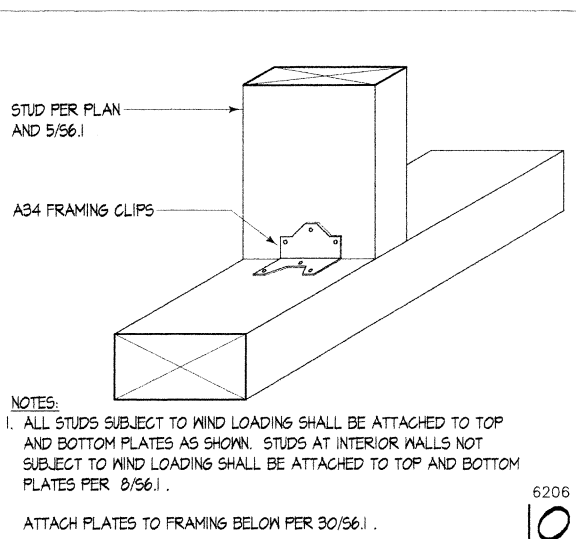
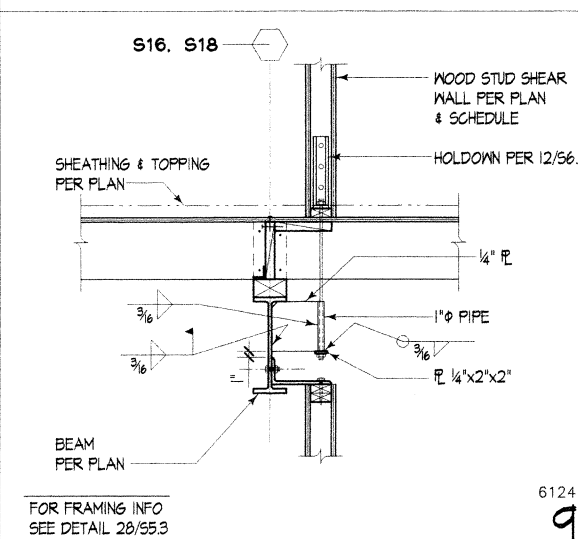


NAILING SCHEDULE
(per 1997 UBC Table 23-1-B-1)

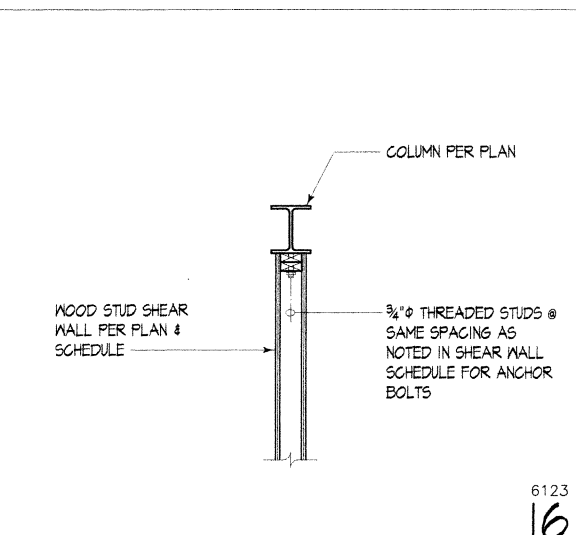
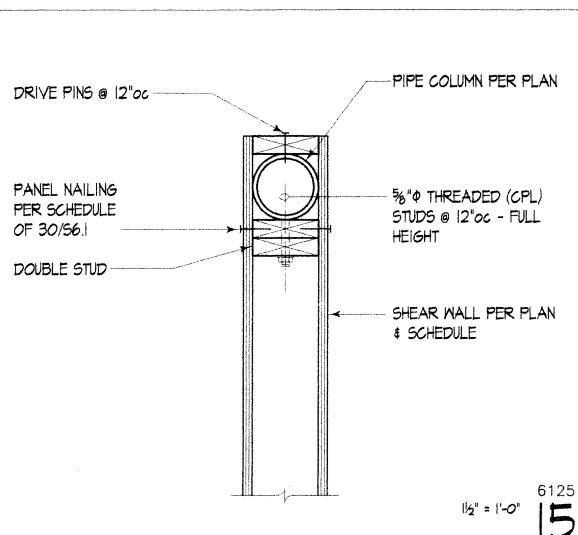
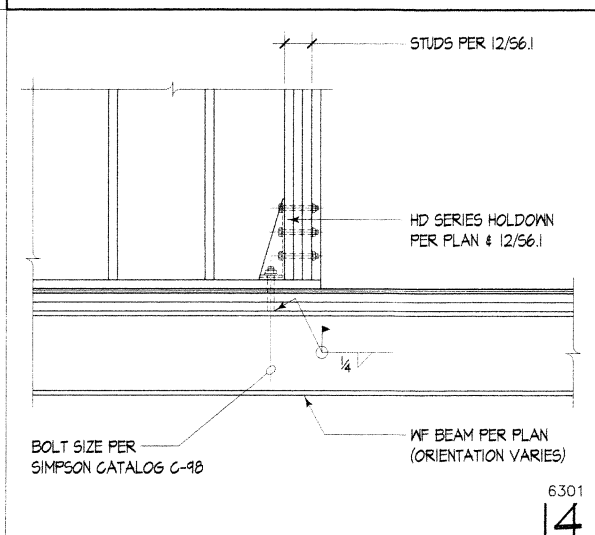
CONNECTION	NAILING
1. Joist to sill or girder, toenail	(3) 8d
2. Bridging to joist, toenail each end	(2) 8d
3. 1" x 6" subfloor or less to each joist, face nail	(2) 8d
4. Wider than 1" x 6" subfloor to each joist, face nail	(3) 8d
5. 2" subfloor to joist or girder, blind and face nail	(2) 16d
6. Sole plate to joist or blocking, typical face nail	16d at 16" oc
Sole plate to joist or blocking at braced nail panels	(3) 16d per 16"
7. Top plate to stud, end nail	(2) 16d
8. Stud to sole plate	(4) 8d, toenail or (2) 16d, end nail
9. Double studs, face nail	16d at 24" oc
10. Doubled top plates, typical face nail	16d at 16" oc
Doubled top plates, lap splice	(8) 16d
11. Blocking between joists or rafters to top plate, toenail	(3) 8d
12. Rim joist to top plate, toenail	8d at 6" oc
13. Top plates, laps and intersections, face nail	(2) 16d
14. Continuous header, two pieces	16d at 16" oc along each edge
15. Ceiling joists to plate, toenail	(3) 8d
16. Continuous header to stud, toe nail	(4) 8d
17. Ceiling joists, lap over partitions, face nail	(3) 16d
18. Ceiling joists to parallel rafters, face nail	(3) 16d
19. Rafter to plate, toenail	(3) 8d
20. 1" brace to each stud and plate, face nail	(2) 8d
21. 1" x 8" sheathing or less to each bearing, face nail	(2) 8d
22. Wider than 1" x 8" sheathing to each bearing, face nail	(3) 8d
23. Built-up corner studs	16d at 24" oc
24. Built-up girder and beams	20d at 32" oc at top and bottom and staggered (2) 20d at ends and at each splice



11. Blocking between joists or rafters to top plate, toenail	(3) 8d
12. Rim joist to top plate, toenail	8d at 6" oc
13. Top plates, laps and intersections, face nail	(2) 16d
14. Continuous header, two pieces	16d at 16" oc along each edge
15. Ceiling joists to plate, toenail	(3) 8d
16. Continuous header to stud, toe nail	(4) 8d
17. Ceiling joists, lap over partitions, face nail	(3) 16d
18. Ceiling joists to parallel rafters, face nail	(3) 16d
19. Rafter to plate, toenail	(3) 8d
20. 1" brace to each stud and plate, face nail	(2) 8d
21. 1" x 8" sheathing or less to each bearing, face nail	(2) 8d
22. Wider than 1" x 8" sheathing to each bearing, face nail	(3) 8d
23. Built-up corner studs	16d at 24" oc
24. Built-up girder and beams	20d at 32" oc at top and bottom and staggered (2) 20d at ends and at each splice

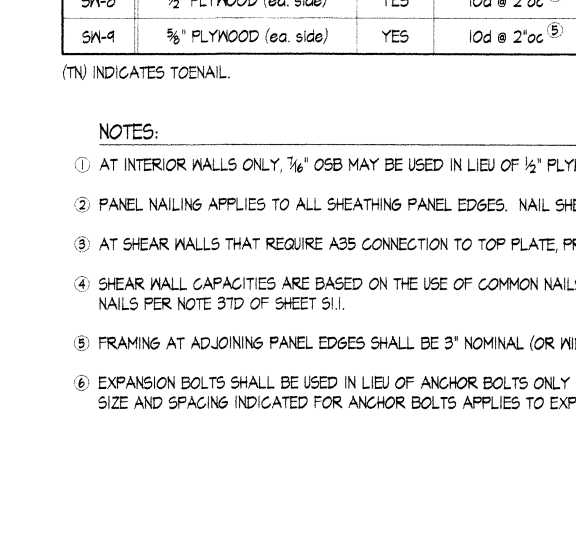
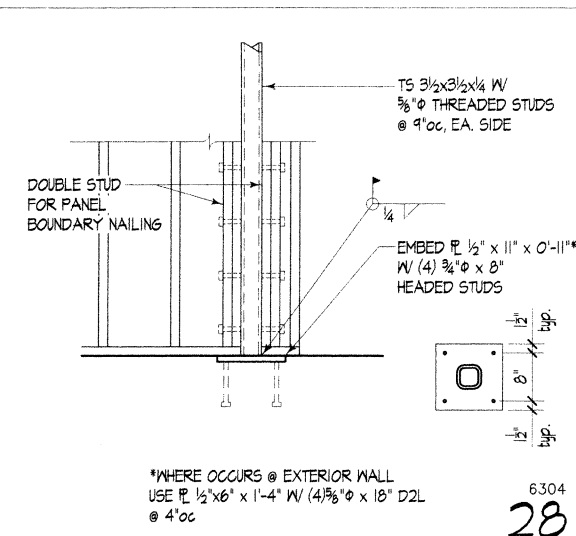
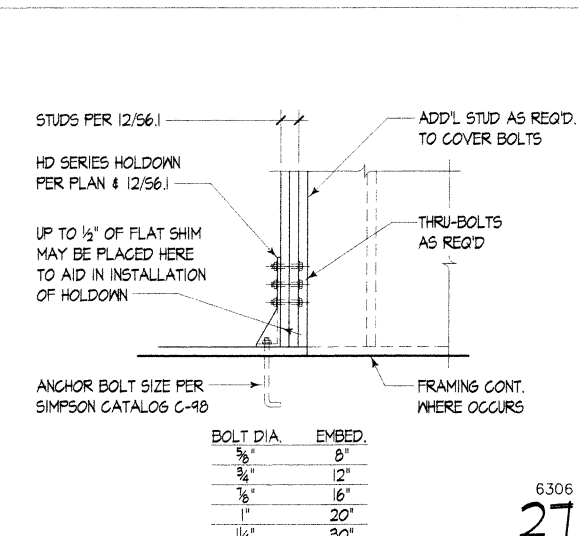
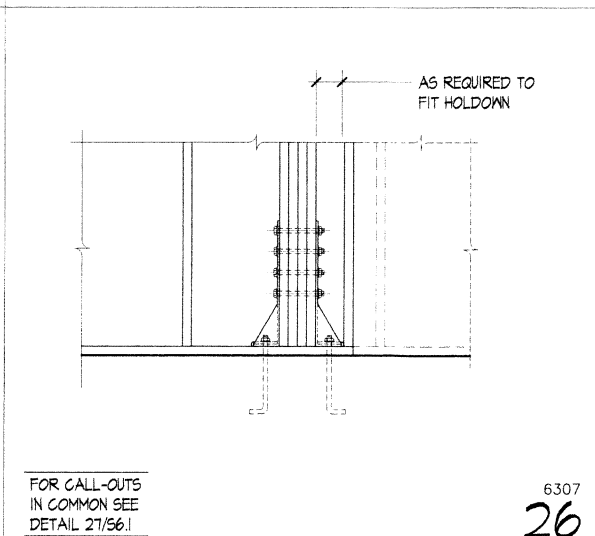
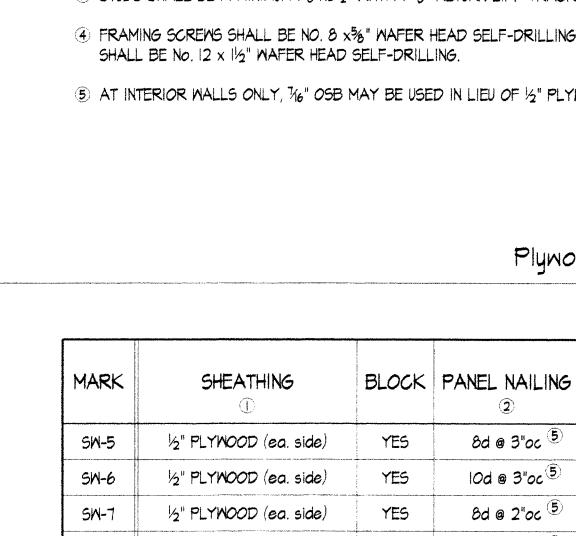
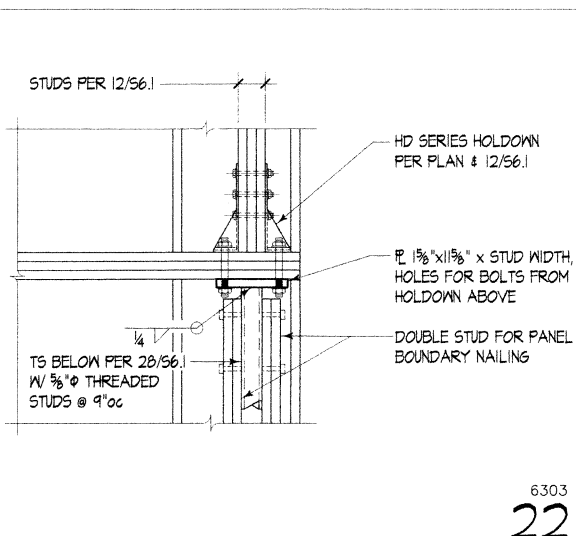
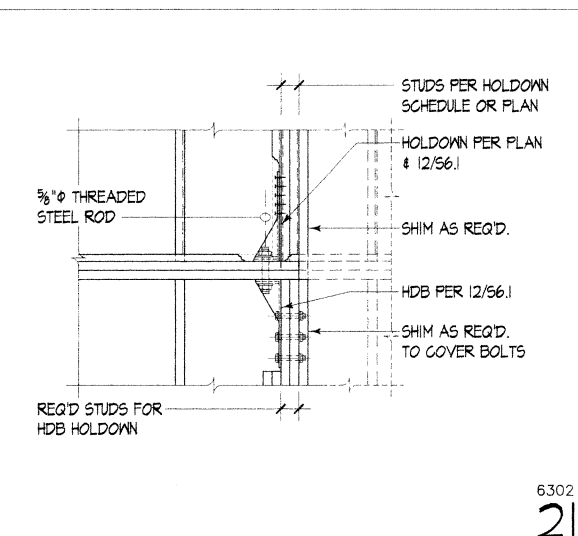
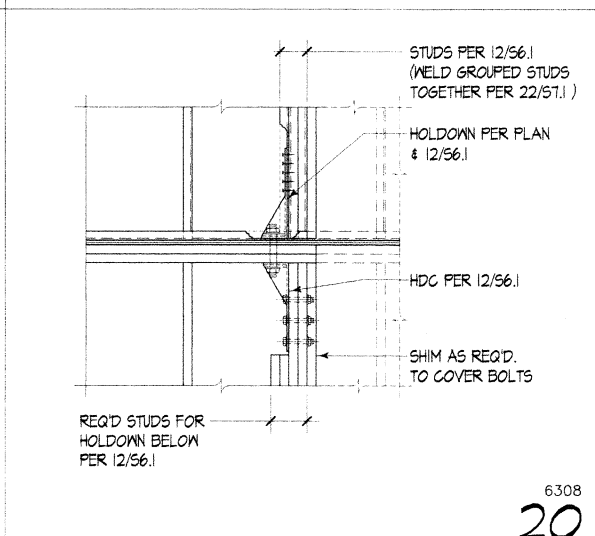


MARK	HOLDOWN	MIN. NUMBER STUDS, U.O.N.	MIN. NUMBER SCREWS	LOAD	DETAIL REF.
HDA	S/HTT4	(2)	(16) #10	5260#	27/56.1 28/56.1 29/56.1
HDB	HDBA	(2)		5415#	27/56.1 28/56.1
HDC	HD10A	(2)		8310#	27/56.1 28/56.1
HDD	S/HD10	(2)	(30) #10	9900#	25/56.1 20/56.1
HDE	HD15	(4)		15305#	27/56.1 14/56.1
HDF	(2) HD10A	(3)		19,080#	4/56.1 22/56.1
HDG	TS 3/2x3/4x4	(4)		33,200#	22/56.1 28/56.1



MARK	SHEATHING	BLOCK	FASTENER SPACING AT PANEL EDGES	SCREWING OF JOIST OR BULKING TO TOP TRACK	BOTTOM TRACK ATTACHMENT		CAPACITY
					DRIVE PINS TO CONC. BELOW	SCREWS TO WOOD BELOW	
SN-1	1/2" PLYWOOD	YES	#8 @ 6" oc	#12 @ 8" oc	0.145 @ 4" oc	#8 @ 5" oc	280 PLF
SN-2	1/2" PLYWOOD	YES	#8 @ 4" oc	#12 @ 8" oc	0.145 @ 7" oc	#8 @ 4" oc	366 PLF
SN-3	1/2" PLYWOOD	YES	#8 @ 3" oc	#12 @ 4" oc	0.145 @ 5" oc	#8 @ 2 1/2" oc	510 PLF
SN-4	1/2" PLYWOOD	YES	#8 @ 2" oc	#12 @ 3" oc	0.145 @ 4" oc	#8 @ 2" oc	650 PLF

MARK	SHEATHING	BLOCK	PANEL NAILING	CONNECTION OF JOIST OR BULKING TO TOP PLATE	BOTTOM PLATE ATTACHMENT		CAPACITY
					FACENAILING TO WOOD BELOW	ANCHOR BOLTING TO CONC. BELOW	
SN-5	1/2" PLYWOOD (ea. side)	YES	8d @ 3" oc	A35 @ 7" oc & 16d @ 10" oc (TN)	16d @ 2" oc	3/8" @ 25" oc	900 PLF
SN-6	1/2" PLYWOOD (ea. side)	YES	10d @ 3" oc	A35 @ 5 1/2" oc & 16d @ 9" oc (TN)	(2) rows of 16d @ 3" oc	3/8" @ 21" oc	1040 PLF
SN-7	1/2" PLYWOOD (ea. side)	YES	8d @ 2" oc	A35 @ 5" oc & 16d @ 10" oc (TN)	(2) rows of 16d @ 3" oc	3/8" @ 19" oc	1200 PLF
SN-8	1/2" PLYWOOD (ea. side)	YES	10d @ 2" oc	A35 @ 8" oc (ea. side) & 16d @ 10" oc (TN)	(2) rows of 16d @ 2 1/2" oc	3/8" @ 16" oc	1420 PLF
SN-9	3/8" PLYWOOD (ea. side)	YES	10d @ 2" oc	A35 @ 8" oc (ea. side) & 16d @ 12" oc (TN)	(2) rows of 16d @ 2 1/2" oc	3/8" @ 13" oc	1740 PLF



Plywood Sheathed Metal Stud Shear Wall Schedule

MARK	SHEATHING	BLOCK	PANEL NAILING	CONNECTION OF JOIST OR BULKING TO TOP PLATE	BOTTOM PLATE ATTACHMENT		CAPACITY
					FACENAILING TO WOOD BELOW	ANCHOR BOLTING TO CONC. BELOW	
SN-5	1/2" PLYWOOD (ea. side)	YES	8d @ 3" oc	A35 @ 7" oc & 16d @ 10" oc (TN)	16d @ 2" oc	3/8" @ 25" oc	900 PLF
SN-6	1/2" PLYWOOD (ea. side)	YES	10d @ 3" oc	A35 @ 5 1/2" oc & 16d @ 9" oc (TN)	(2) rows of 16d @ 3" oc	3/8" @ 21" oc	1040 PLF
SN-7	1/2" PLYWOOD (ea. side)	YES	8d @ 2" oc	A35 @ 5" oc & 16d @ 10" oc (TN)	(2) rows of 16d @ 3" oc	3/8" @ 19" oc	1200 PLF
SN-8	1/2" PLYWOOD (ea. side)	YES	10d @ 2" oc	A35 @ 8" oc (ea. side) & 16d @ 10" oc (TN)	(2) rows of 16d @ 2 1/2" oc	3/8" @ 16" oc	1420 PLF
SN-9	3/8" PLYWOOD (ea. side)	YES	10d @ 2" oc	A35 @ 8" oc (ea. side) & 16d @ 12" oc (TN)	(2) rows of 16d @ 2 1/2" oc	3/8" @ 13" oc	1740 PLF

Project: SUN SYSTEMS 6/20/2005 File: 05-501.006 Rev: 002 Date: 5/16/05 Designer: JEC Checker: JEC
 5/18/99 CONSTRU. SET

MITHUN PARTNERS
ARCHITECTURE PLANNING & INTERIOR DESIGN
514 OLIVE WAY
SUITE 500
SEATTLE, WA 98101
(206) 463-3344
FAX: (206) 463-3345

SUN HEALTHCARE SYSTEMS, INC.
INC. **CAMPUS: PHASE ONE**
ANACORTES, WASHINGTON

JEC
ARCHITECT
BTL
PROJECT MANAGER
CSD
PROJECT ENGINEER
HRB
DRAWN
JEC
CHECKED

COUGHLIN PORTER LUNDEEN
A CONSULTING ENGINEERING AND CIVIL ENGINEERING CORPORATION
217 PINE STREET, SUITE 300
SEATTLE, WA 98101
P: 206-343-6800
F: 206-343-9991

WILLIAMS E. COUGHLIN
REGISTERED PROFESSIONAL ENGINEER
EXPIRES 12/31/04

WOOD FRAMING DETAILS

08-0027-04
MAY 18, 1999
DWG

0000
S6.1 CONSTRUCTION SET