

WELCOME!

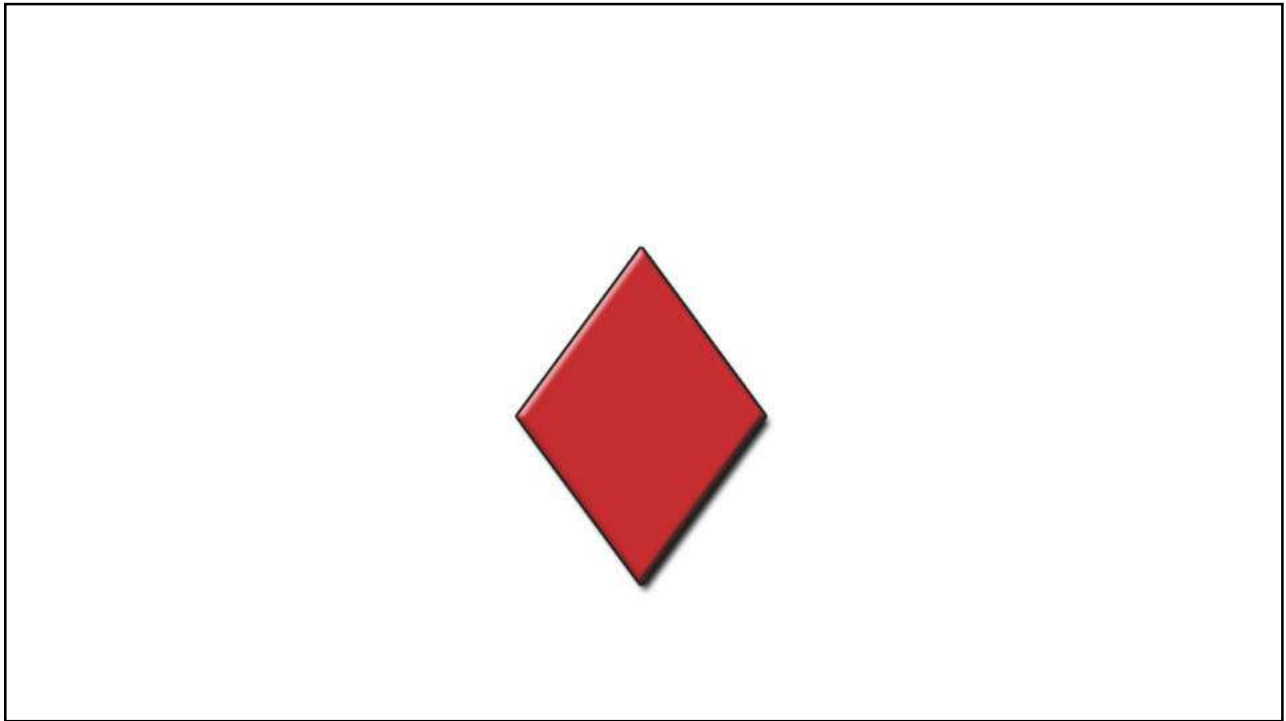
Curriculum Directors Meeting

October 20, 2017



Introductions





A better life....



- Think about the video clip and your why....
- Share with a partner

MISSION

Together We Can... promote *equity* and *excellence* through *leadership* and *service*.

VISION

To be an *indispensable partner* to our region's school communities.

VALUES

- Responsive *customer service*
- Open *communication*
- Regional *collaboration*
- Flexible *teamwork*
- Adaptable *professional learning*
- Positive *relationships*

GOALS

- Provide *quality services* that meet our region's needs.
- Prepare students for college, career and citizenship.
- Foster *educator effectiveness* to assure equity and opportunity for all students.

5 Counties:
Skagit, Snohomish, Whatcom, Island, San Juan

35 School Districts: Anacortes, Arlington, Bellingham, Blaine, Burlington-Edison, Concrete, Conway, Coupeville, Darrington, Edmonds, Everett, Ferndale, Granite Falls, Index, La Conner, Lake Stevens, Lakewood, Lopez Island, Lynden, Marysville, Meridian, Moses, Mount Baker, Mount Vernon, Mukilteo, Nooksack Valley, Oak Harbor, Ocean Island, San Juan Island, Sedro-Woolley, Shaw Island, Sashimi, South Whidbey, Stanwood-Camano, Sultan

165,791 Students 439+ Schools 8,845 Classrooms

For every \$1 of State core funding we generate \$40.11 of programs and services to students and staff across our region.

Northwest Educational Service District 189

Washington State's ESD Network

Nine ESDs. One Network. Supporting Washington's Schools and Communities.

GOALS

Provide *quality services* that meet our region's needs.

Prepare students for college, career and citizenship.

Foster *educator effectiveness* to assure equity and opportunity for all students.

Outcomes for today:

- Receive updates from OSPI on curriculum, assessment, TPEP and content coordinators.
- Leave with some new ideas for resources to use in your district.
- Continue our learning about equity
- Learn a protocol that could be used back in your districts.
- Collaborate with colleagues about “coherence”
- Learn from colleagues’ problems of practice

Updates from the State



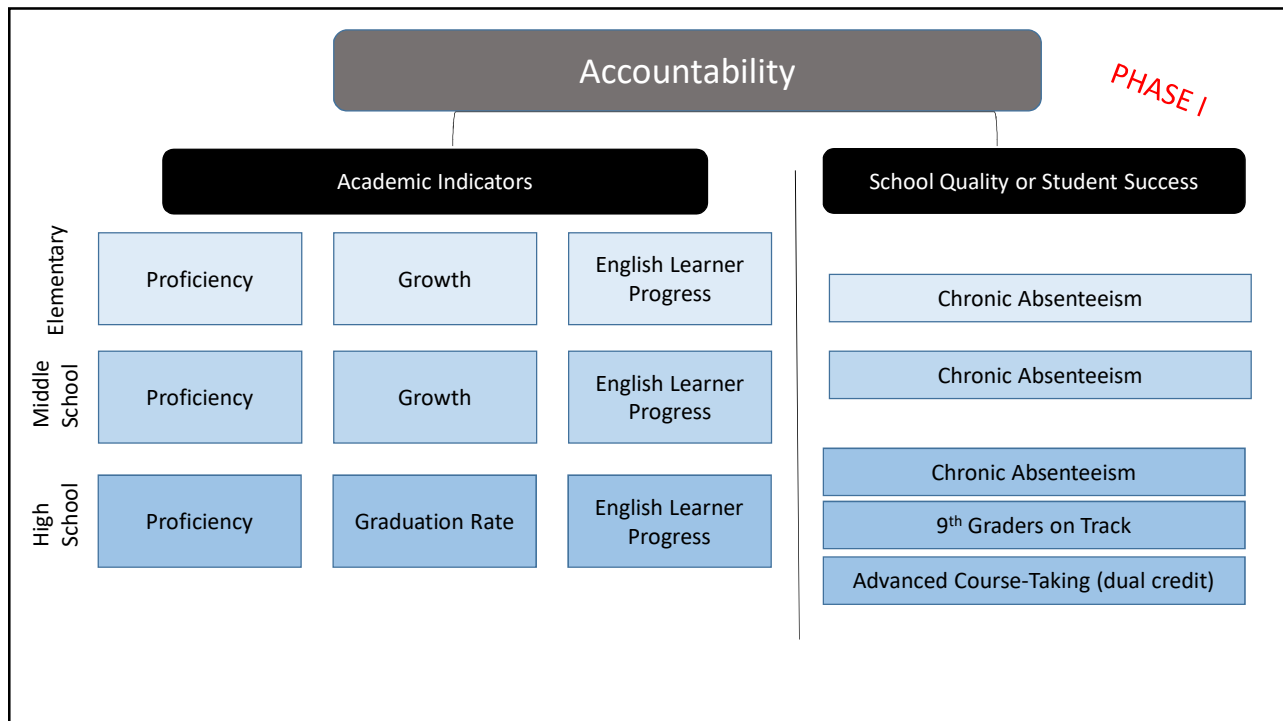
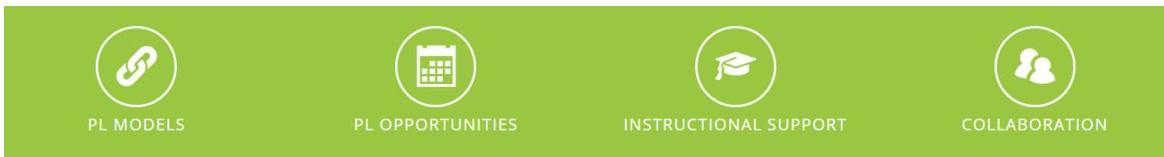
The Learning Space
for ALL Washington Educators

www.learning-space.org

The Learning Space:



A collaborative initiative between the AESD and OSPI to bring educators together to reflect, share, and learn from one another to support best practices in learning and teaching and to provide a central location for all Washington educators to find high quality and evidence-based professional learning resources and practices.





10/24/2017

OFFICE OF SUPERINTENDENT OF PUBLIC INSTRUCTION

13

GATE--Graduation: A Team Effort is...

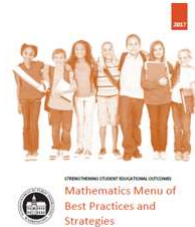
A collaborative effort to increase high school graduation rates by developing and sustaining a dropout prevention/intervention system, and reengaging youth who have dropped out.

In 2016, the 4-year state graduation rate increased to 79.1%



The Value of Graduation
A high school diploma provides \$552,205* in benefits to the graduate, taxpayers and society.

Strengthening Student Educational Outcomes



Social and Emotional Learning in Washington State Schools: Building Foundations and Strategies

- This online module has been designed in five distinct learning segments for a total of 6 hours.
- Learning Segment 1: Introduction to SEL
- Learning Segment 2: Embedding SEL Schoolwide
- Learning Segment 3: Creating a Professional Culture Based on SEL
- Learning Segment 4: Integrating SEL into Culturally Responsive Classrooms
- Learning Segment 5: Identifying and Selecting Evidence-Based Programs
- <http://www.k12.wa.us/StudentSupport/SEL/OnlineModule.aspx>

PASTL:
Partnership for Ambitious Science Teachers
Cohort 3 June 2018



Concept based Instruction Units

- Oct 20 deadline for Summer Institute
- Nov 1-2: 60 signed up
- Day 3 session fro CBIU coming in January
- Spring 2018—more sessions



[Questions](#) | [CC0](#)

problem of practice

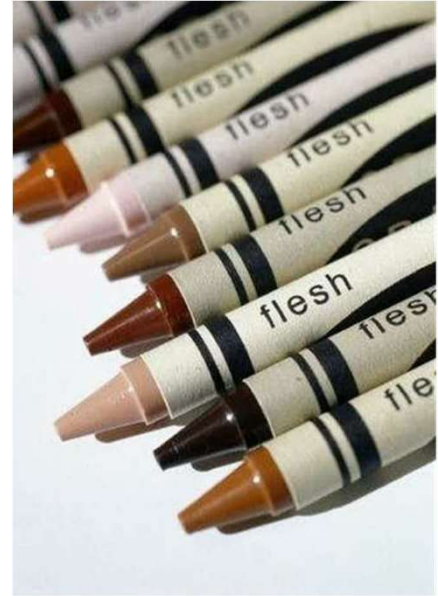
- **Cindy Simonsen**
- **Anacortes School District**

NWESD COORDINATORS UPDATE

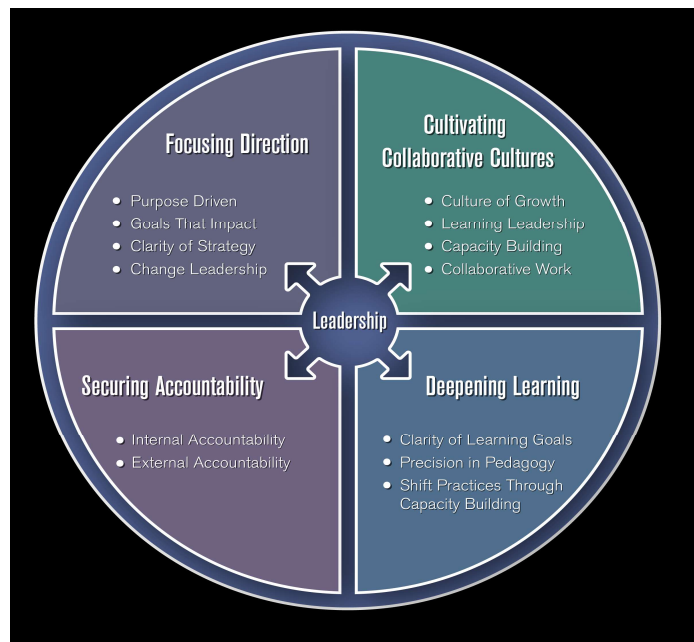


Leading for equity

- Gayle Everly



COHERENCE



Reading Protocol

- Two groups of 10
- Count off 1-5
- Each pair will read their section individually
- Synthesize your section with your partner
- Pairs will report to the group
- **Group agrees on the 3-4 key points**

- Pairs read the following:
 - 1: Pages 1-3
 - 2: Pages 4-6
 - 3: Pages 7-9
 - 4: Pages 10-12
 - 5: Pages 13-15
- Read individually ; pairs synthesize their section & report to their group

Now, we will get into 4 groups

- Whole group develops a hashtag regarding:
- Create a hashtag that helps create coherence of the work from today's meeting

UPCOMING MEETINGS

- **November 17-Curriculum Directors meeting a.m. and**
- **District Assessment in afternoon**

PRINCIPALS APPRECIATION MONTH



Individual Reflection

- What is the learning that is leaving the room with you today?
- What will you do with this information?

Questions?