



Language acquisition does not require extensive use of conscious grammatical rules, and does not require tedious drill.

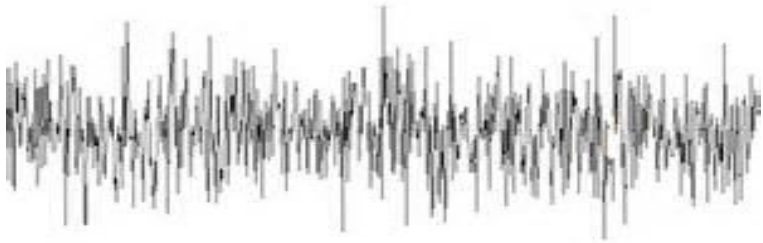
Stephen Krashen

## Affective Filter

A learner's feelings/emotions (stress, anxiety, boredom) may block language input into the brain.



## Input Hypothesis



Input must be **comprehensible**-learners must be able to make meaning from what they hear, or it is just hearing noise.

i + 1



Krashen, S. (1982). *Principles and Practice in Second Language Acquisition*. Oxford: Pergamon Institute of English.

Wow... she sure is using a lot of Spanish... she NEVER speaks in English anymore.

Uh oh...she is calling on people...please not me, please not me. Oh thank goodness... it wasn't me .... this time.

Oh...I understood that... and that. I think she is talking about the weekend... yeah definitely future tense...

How would I say that... yo tengo...no... yo soy.... aah... there is no way I can talk without practicing in my head first...

I think I read about this somewhere... I remember these words... where did I see them?





# Jim Cummins

## **BICS:**

**Basic  
Interpersonal  
Communication  
Skills**

(social)

**CALP:  
Cognitive  
Academic  
Language  
Proficiency**

(academic)

Cummins, J. (1981). The role of primary language development in promoting educational success for language minority students. In California State Department of Education Office of Bilingual Education. *Schooling and language minority student: A theoretical framework* (pp.3-49). Sacramento, CA.