

Intro to eVAL  
RIG 2-2 Districts  
January 31 2013

Cathey Frederick  
eVAL Specialist - ESD 189  
[cfrederick@nwesd.org](mailto:cfrederick@nwesd.org)



# Goals

- Overview of eVAL tool and rationale for using
- Overview of resources
- Review of Readiness for using eVAL
- Introduction to roles in eVAL
- Planning for next steps

# What is eVAL?

eVAL is a **web-based tool** designed to manage the evaluation process and documentation. Developed in partnership with the Washington Education Association, the Office of Superintendent of Public Instruction, and Educational Service District 113, eVAL is:

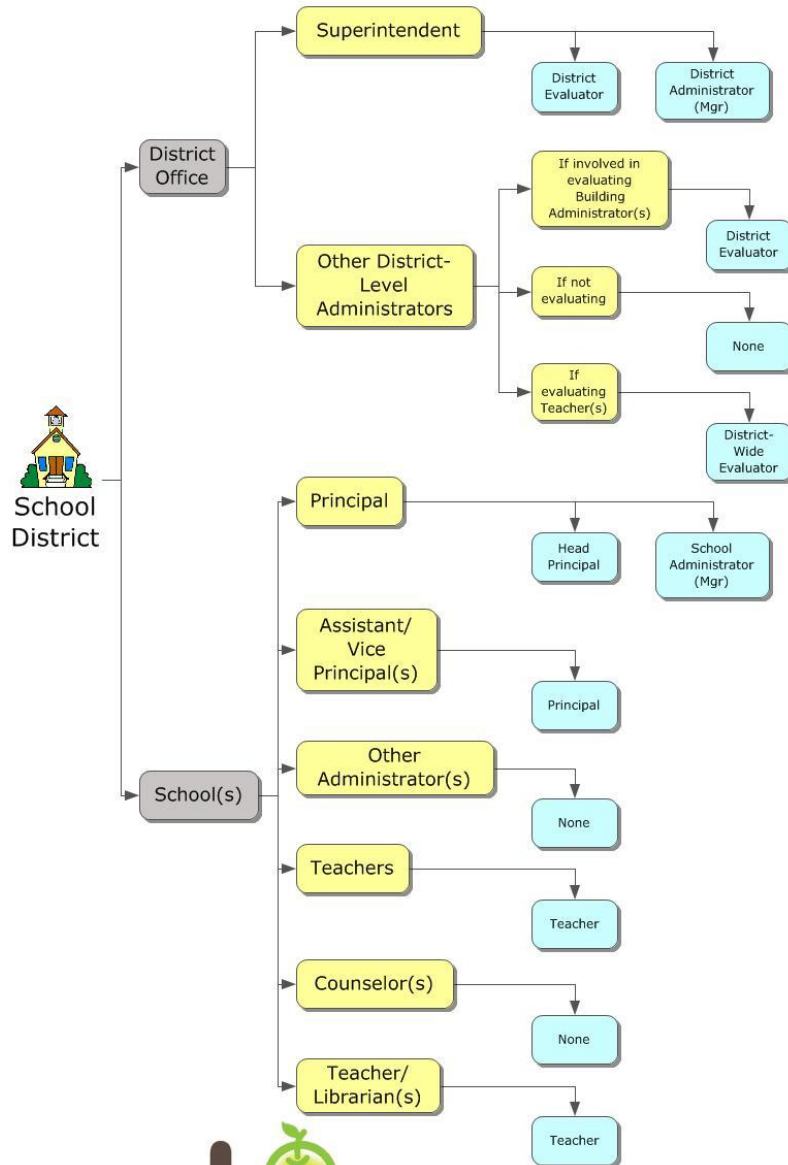
- a **free resource** used by our Teacher/Principal Evaluation Pilot and RIG Districts in the 2012-13 school year;
- **personalized** for each District for their instructional framework, resources, and documents;
- **voluntary** for all Districts, who can use as many or as few of eVAL's features as they'd like (or none at all); and
- extremely **secure** with limited access physically and virtually to its servers.

# Online Support

- Washington State Teacher/Principal Evaluation Project
  - <http://tpep-wa.org/resources/eval/>
- ESD 189
  - <https://library.nwesd.org/tpep/eval-supporting-documents>
  - Readiness Checklist
  - eVAL Roles and Tasks

# eVAL Role Assignments

Typical or Recommended



## Evaluator Roles

- District Evaluator
- District-Wide Evaluator
- Head Principal
- Principal

## Materials/Management Roles

- District Administrator
- School Administrator

## Scope

Each role can “impact” only the section of the district assigned

# Next Steps

- What do you need to do next?
- Who needs to be involved?
- When does it need to happen?
- How can I help?

# Goals

- Overview of eVAL tool and rationale for using
- Overview of resources
- Review of Readiness for using eVAL
- Introduction to roles in eVAL
- Planning for next steps

# Thank You!

Cathey Frederick

ESD 189 eVAL Specialist

[cfrederick@nwesd.org](mailto:cfrederick@nwesd.org)