

EXHIBIT READY SCHOLASTIC ART

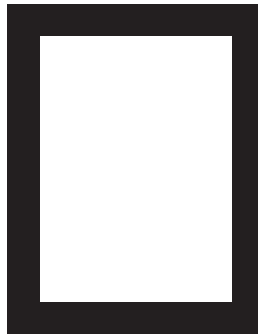
All teachers are expected to bring their student 2D artwork matted and labeled and ready to exhibit.

2D EXHIBIT READY

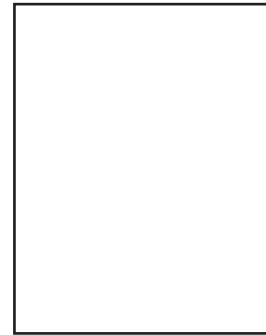
- mat artwork - black or white mat board
- plastic hanger centered and lined up with top edge of mat back.*
- entry form taped top and bottom to mat back.
- written on mat back:
 - title of piece
 - student name
 - school name
 - school address



ARTWORK



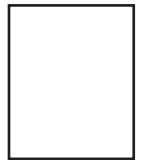
MAT



FOAMCORE



PLASTIC HANGER



ENTRY FORM

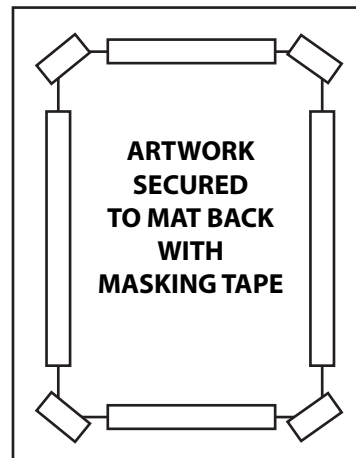
* Stretched canvas and canvas board does not need to be matted. * Heavier artwork needs a wire hanger.



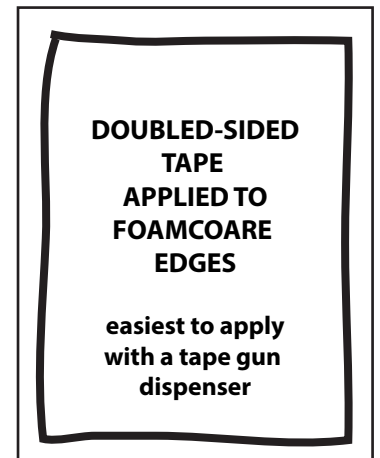
ARTWORK



MAT FRONT



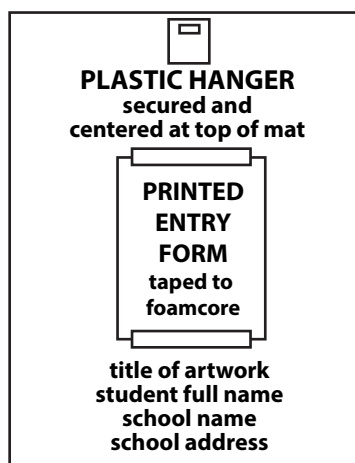
MAT BACK



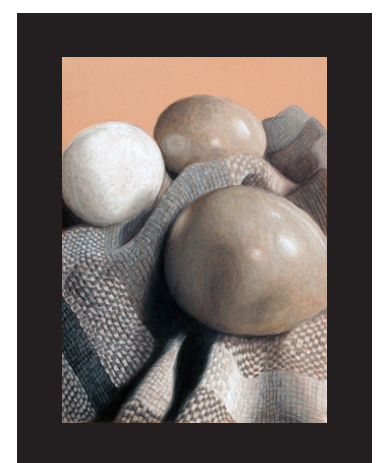
FOAMCORE BACKING



FOAMCORE BACKING
SECURED TO MAT BACK



FOAMCORE BACK



MATTED ARTWORK
SECURE AND EXHIBIT READY