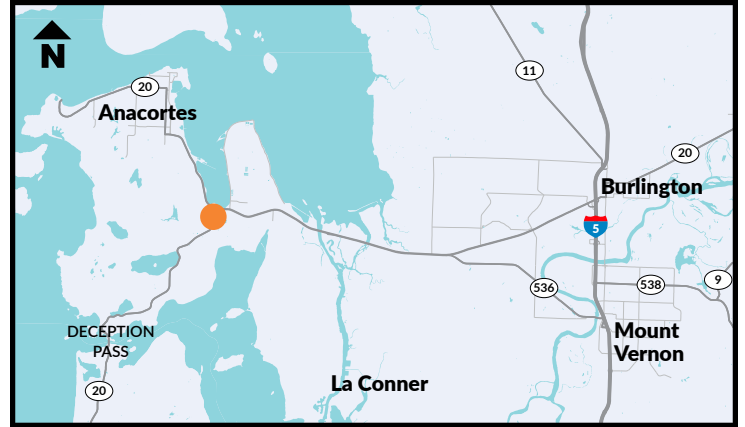
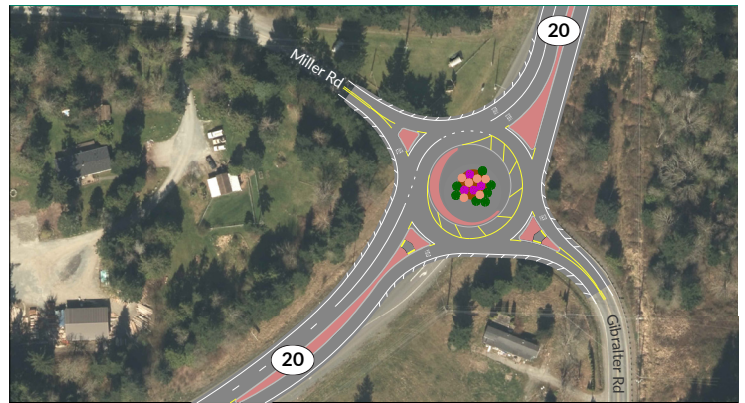
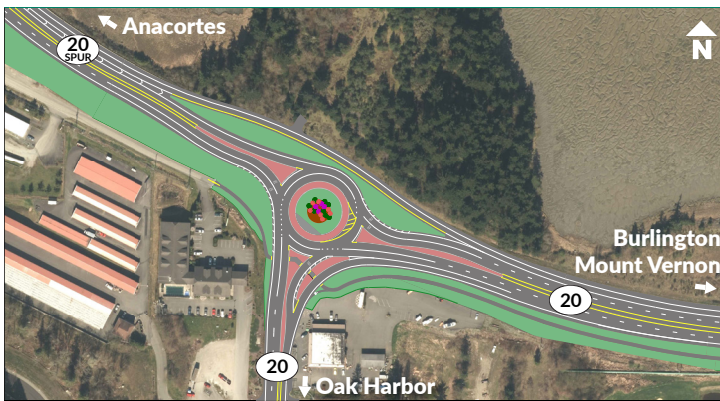


# SR 20: Sharpes Corner Area Intersection Improvements



STARTING IN SPRING OF 2018, WASHINGTON STATE DEPARTMENT OF TRANSPORTATION CONTRACTOR CREWS FROM TAPANI, INC. WILL BUILD TWO NEW ROUNDABOUTS ON SR 20 NEAR SHARPES CORNER. CREWS WILL BUILD ONE AT THE INTERSECTION OF SR 20 AND MILLER/GIBRALTER ROADS BEFORE MOVING NORTH TO SR 20 AND SR 20 SPUR.



**B**uilding these roundabouts will improve safety and decrease congestion at this intersection.

The double lane roundabout at Sharpes Corner and bypass lane for westbound traffic will improve safety by reducing the number of conflict points and improving traffic flow. Drivers will no longer have to wait for a light to change. Instead, they will yield to any vehicle already in the roundabout before entering in a counter clock-wise direction through the intersection and onto their destination. Gaps will naturally be created as traffic from all legs enter the roundabout. Stoplights east of Sharpes Corner will also help meter some traffic.

## Project Benefits:

- Improve safety by reducing conflict and merge points.
- Reduce congestion, lowering travel times through the intersection.
- Add a pedestrian and bicycle trail to improve access for people of all abilities.
- Lower idling times to save gas and reduce emissions.



An aerial view of Sharpes Corner looking south toward Miller/Gibraltar roads.

## Stages of Construction

### April – May:

- Construction begins at SR 20 and Miller/Gibraltar roads.
- Traffic will alternate through this area around-the-clock.
- Access to Miller/Gibraltar roads will always be available.

### May until Memorial Day Weekend:

- Crews begin work at SR 20 and SR 20 Spur.
- Bypass lane construction will start first.
- Drivers should prepare for a single lane in all directions.

### Following Memorial Day Weekend until July 4:

- Crews will begin building the Sharpes Corner roundabout.
- Traffic will remain a single lane in all directions.
  - Eastbound traffic will turn right at SR 20 and drive to Miller/Gibraltar roads, U-turning at the new roundabout.
  - Oak Harbor to Anacortes traffic will briefly head east on SR 20 and U-turn at March's Point Road.
  - I-5 to Whidbey Island traffic will be merged into the current eastbound lane just west of March's Point Road and will use the current Oak Harbor to Anacortes turn lane to continue up the hill.
  - Westbound and northbound to eastbound travelers will use the new bypass lanes.
- Around-the-clock closures will wrap up by July 4.

This timeline is approximate. Once both roundabouts are open to traffic, crews will finish small areas of work during overnight lane closures.

## MORE INFORMATION:

[bit.ly/SharpesCornerRAB](https://bit.ly/SharpesCornerRAB)

**Andrea E. Petrich**  
Communications  
360-757-5963  
[PetricA@wsdot.wa.gov](mailto:PetricA@wsdot.wa.gov)

**Gabe Ng**  
Project Engineer  
360-788-7403  
[NgGabe@wsdot.wa.gov](mailto:NgGabe@wsdot.wa.gov)

**Americans with Disabilities Act (ADA) Information:** Accommodation requests for people with disabilities can be made by contacting the WSDOT Diversity/ADA Affairs team at [wsdotada@wsdot.wa.gov](mailto:wsdotada@wsdot.wa.gov) or by calling toll-free, 855-362-4ADA (4232). Persons who are deaf or hard of hearing may make a request by calling the Washington State Relay at 711.

**Title VI Statement to Public:** It is the Washington State Department of Transportation's (WSDOT) policy to assure that no person shall, on the grounds of race, color, national origin or sex, as provided by Title VI of the Civil Rights Act of 1964, be excluded from participation in, be denied the benefits of, or be otherwise discriminated against under any of its federally funded programs and activities. Any person who believes his/her Title VI protection has been violated, may file a complaint with WSDOT's Office of Equal Opportunity (OEO). For additional information regarding Title VI complaint procedures and/or information regarding our non-discrimination obligations, please contact OEO's Title VI Coordinator at (360) 705-7090.